

# CENTRAL WEST TRILLIUM CIRCUIT SHOW GUIDE 2019

## Welcome to the Central West Trillium Circuit!

The Central West Trillium Zone is incorporated as a not for profit organization and is governed by the rules of Equestrian Canada (EC). The bylaws of the Central West Trillium Association govern the conduct of its governing body and all members in the zone.

The [Trillium Hunter Jumper Association](#) has divided the province into seven geographical zones. The main premise behind this decision was that competitors would not have to travel significant distances on a regular basis to be involved in the horse show circuit. They can show relatively locally, and complete their division in one day. This geographic division of the province has served the organization very well in that on any given weekend, there can be as many as seven Trillium Shows on!

The Zone offers hunter, jumper, equitation and hack classes at all of its shows.

The circuit is comprised of eleven horse shows that run through a set region within the province of Ontario. Central West has shows from the Niagara Region to up and into the Golden Horseshoe. The series end Championships hosts the best in the province!

Central West has a proud tradition within the Trillium Hunter & Jumper Association which started in 1983 and has been growing with one of the biggest memberships of the THJA. The organization was designed with the goal of bridging the gap between local schooling shows, and the "A" Circuit. The Trillium Circuit would provide exhibitors a viable local alternative to pursue their equine competition interests, and would provide a training ground for new judges, course designers and stewards.

Good luck to all our new and returning competitors to the Central West Trillium Circuit!





# Meadowlarke North

## Summer & Winter Show Series

### 2019 Summer Series

#### Show Dates

Sunday April 7

Indoor - Jumpers Only

Sunday April 14

Indoor - Hunters/Hack Only

Monday May 20

Hunters/Jumpers/Beginners

Monday July 1

Hunters/Jumpers/Beginners

Monday August 5

Hunters/Jumpers/Beginners

Monday September 2

Finale - Hunters/Jumpers/Beginners



### Summer Series

- \* 2 beautiful outdoor Sand Rings
- \* Indoor Ring w/Fiber Footing
- \* Spacious Warm-up Ring w/Fiber Footing
- \* Hunters, Jumpers & Beginners
- \* Professional, Friendly & Fun

### Winter Series

- \* 100' x 240' Indoor Ring
- \* 80' x 144' Warm-up Ring both w/ Fiber Footing
- \* HEATED Waiting Ring & Spectator Area
- \* Hunters & Jumpers
- \* Horse Shows & Arena Rentals

**www.MEADOWLARKESTABLES.com**

info@meadowlarkestables.com

800-295-0419



## A BLACK TIE AFFAIR

SAVE THE DATE: OCTOBER 4, 2019 AT THE LIUNA STATION, HAMILTON, ONTARIO

More details to follow during the show season





## 2019 CHARITY SHOW & DINNER

**JUNE 15<sup>TH</sup>, 2019**

**THE VIP DINNER EXPERIENCE**



*Gourmet Dinner Catered  
by  
Food Network Chef  
Matt Basile*

*Open Bar  
Guest Giveaways  
Silent Auction  
\$150/ticket taxes included*



**TICKETS AT [WWW.VECTORCHARITYSHOW.COM](http://WWW.VECTORCHARITYSHOW.COM)**

## 2019 CHARITY SHOW & DINNER



Bruno Delgrange  
MAITRE D'HOTEL  
DE FRANCE

**Sponsor of  
Rider Bonus  
Prizes \***

1st - \$300  
2nd - \$200  
3rd - \$200

\*Vouchers to be redeemed for  
products



*Heather Boyko & Spiced Rum  
Winners 2016, 2017 & 2018!*

**JUNE 15<sup>TH</sup>, 2019**

**RIDE IN THE SHOW!**

*\$5,000 Prize Money*

*1M Open Jumper Coolers to 3<sup>rd</sup> Neck Ribbons to 10<sup>th</sup>*

*Amazing Rider Giveaways Choose your song!*

*\$200/Entry taxes included*





# Sugarbush Show Series



July 3<sup>rd</sup> at Findaway Equestrian  
July 10<sup>th</sup> at Findaway Equestrian  
July 24<sup>th</sup> at Terrian Equestrian (new)  
July 31<sup>st</sup> at Millside Stables  
August 14<sup>th</sup> Millside Stables  
August 21<sup>st</sup> at Terrian Equestrian (new)



**LEANNE  
GUINN**

Sales Representative

C: 416-460-1687

O: 905-338-3737

leanne@royalpage.ca

www.leanneguinn.ca

#WinWithGuinn

**ROYAL LePAGE**  
Royal LePage Real Estate  
Services Ltd., Brokerage



info@findawayequestrian.com  
www.findawayequestrian.com

Hunter - Jumper - Boarding - Lessons - Training - Sales

Findaway is a proud and long-time supporter  
of the Central West Trillium Circuit.

Good luck to all competitors and have  
a safe & fun-filled show season.







# CENTRAL WEST TRILLIUM CIRCUIT

## President's Message

### CENTRAL WEST TRILLIUM REGION 2019

**CONGRATULATIONS TO OUR MEMBERSHIP!**

**WE BROUGHT HOME THE 2018 PROVINCIAL  
CHAMPIONSHIP TROPHY!**

This major accomplishment can be attributed to the level of competition provided throughout the Central West show season. Many thanks to the competition venues & to the crews of people that care for our ponies, horses & riders!

If you are new to the Central West Circuit or returning for more great competition we strive to make your experience positive! We welcome your feedback through our Annual Survey & Town Hall Meeting.

Specifications for all 2019 Divisions can be found on the Central West and THJA websites.

[www.centralwestzone.com](http://www.centralwestzone.com)  
[www.trilliumhunterjumperassociation.com](http://www.trilliumhunterjumperassociation.com)

Please email the Central West Board if you have questions, concerns or suggestions.

[CWTrilliumboard@gmail.com](mailto:CWTrilliumboard@gmail.com)

Many thanks to Yvonne Busby for her work on the 2019 Show Guide and administrative support to the zone throughout the year.

**WISHING EVERYONE A PRODUCTIVE AND  
ENJOYABLE SHOW SEASON!**

From the Central West President

*MISSY TODD*

Vice President - Jenny Lineker

Directors at Large - Natalie Pentesco-Parish  
Carra Ballantyne







## TABLE OF CONTENTS

What You Need To Know..... 7

Official Program,  
Rules, and Claims.....11

Division Specifications..... 14

Pricing and Rules..... 24

Show Dates.....25

Show Schedules.....26

## IMPORTANT DATES

The 2019 Trillium Championships  
will be held August 29th to September  
1st at the Caledon Equestrian Park.

The 2019 Central West Awards Banquet  
will be held October 4th at the Liuna  
Station, 360 James Street North,  
Hamilton, Ontario. More details will  
follow during the show year.

**ON THE COVER:** Go With The Flow &  
Lauryn - Todd Morris Photo

## What You Need to Know

Anyone mounted on a horse must wear an ASTM/SEI or BSI/ BS EN approved helmet with safety harness correctly fastened, at all times while on the competition grounds.

Competitors must compete at a minimum of six shows during the season in the same division(s) to qualify for the Trillium Championships and year end awards.

Hunter - Second cumulative refusal, run-out, or bolting on course results in elimination.

Ponies - Ponies 8 years and over that have been officially measured at an Equestrian Canada sanctioned event will be issued an official measurement card. All ponies will be subject to random measurements, regardless of whether or not a pony has a permanent measurement card. Further information regarding pony measurement will be available at the horse shows and from the Stewards. See EC Rules - General Regulations, Article 1104.





**Jumper Medal** - All tack remains the same for jumping and flat phases.

**1.0 m Jumper Division** - This division combines the Child/Adult Jumper & Open Divisions. Open to all horses, and to ponies who are ridden by juniors. Adults are not permitted to ride ponies in this division. Maximum height of fences 1 Metre. Run under Table A.

**Trillium Jumper (1.10 m)** - This division is open to all jumper competitors; however the horses are limited to two jumper divisions plus the Jumper Medal and any other miscellaneous classes.

**Drug Testing** - Any horse entered in any class at a competition may be selected for equine medication testing while at the event location.

**Posted Order of Go** – A posted order of go will be available a minimum of 30 minutes before the class start. If there is a conflict, a horse/rider combination has 5 single trips in a ring to make it to the posted order ring. One ring may be made the priority ring.



**Un-judged Schooling Round** - Some shows will be offering competitors an un-judged hunter schooling round. The round will be open to all riders including professionals. Full dress is required. The set course will be jumped once only (2 stops constitute elimination). Each horse is limited to one un-judged schooling round per ring/per day. Equitation riders who are not competing in any other divisions may school over the set schooling course for their respective heights.

**Scratched Entries** -

Scratched entries will pay the scratch fee, in full, with the administration fee. If the entry does not scratch with the show office then full entry fees will apply.

**Hunters:** Once the division has started over fences class fees will not be refunded.

**Jumper/Equitation/Medals:** once a class has started the class fee will not be refunded.

**Unpaid Show Accounts** - unpaid accounts will be reported to the zone committee and the competitor/owner will be considered "not in good standing." This will affect the future status of the competitor/ owner on the THJA circuit.

***It is your responsibility to know the rules & memberships required to Show***

**Trillium Hunter/Jumper Association**

[www.thja.ca](http://www.thja.ca)

2019 THJA membership information can be obtained from the THJA website

**Equestrian Canada**

[www.equestrian.ca](http://www.equestrian.ca)

308 Legget Dr., Suite 100

Ottawa, ON K2K 1Y6

Phone: 1-866-8395 ext. 112

**Ontario Equestrian**

[www.horse.on.ca](http://www.horse.on.ca)

Phone: 905-709-6545



### **Equestrian Canada Rule Changes/Updates for 2019**

As per EC rules ponies are now permanently measured at 8 years old and must be measured at a EC sanctioned show they are competing at in order to be measured by the steward. Ponies under 8 years of age must be measured each year. Pony owners/riders must be able to produce a copy of their measurement forms should the stewards request, See Section A, General Regulations, Article A 1104,

Article G706-Orders of Go - In the case of a rider who is competing in a class with more than one horse, the order of go should provide at least ten horses, when possible, between the rider's horses. The horses will be moved up in the order to satisfy this rule.

FEI224: In case of a fall of an athlete/horse at any time in the competition arena, practice arena, or anywhere else within the grounds of the event, the athlete/horse must be cleared by the event's medical service before the athlete/horse may be permitted to take part in the next round or competition at the event.

#### **FEI 235.3 and 4**

In the event of a fall of the athlete/horse at any time in competition arena, whether the signal to start the round has been given or not, the athlete/horse must be cleared by the event's medical service before they are permitted to take part in the next round. If the athlete falls after the finish line in the first round of an immediate jump off, they are not eliminated from the initial round but they will not be allowed to continue on into the jump off and will be placed based on their first round score.

#### **G506 Championships:**

In case of a tie for champion/reserve, the highest placing in the largest prize money class of the division will be used. If all classes have the same prize money (Trillium), the highest placing in the last class will be used.

### **Official Program, Rules, and Claims**

The Trillium Shows listed in this program are recognized provincial circuit competitions of Equestrian Canada ("EC") and its rules and regulations.

#### **Equestrian Canada Statement of Principles**

Upholding the welfare of all horses, regardless of value, as a primary consideration in all activities requiring that horses be treated with kindness, respect and compassion, and that they never be subjected to mistreatment; ensuring that owners, trainers and exhibitors, or their agents, use responsible care in the handling, treatment and transportation of their own horses as well as horses placed in their care for any purpose; providing for the continuous well-being of horses by encouraging routine inspection and consultation with health care professionals and competition officials to achieve the highest possible standards of nutrition, health, comfort and safety as a matter of standard operating procedure; providing current information on Code of Practice for the Care and Handling of Equines and other equine health and welfare initiatives ; continuing to support scientific studies on equine health and welfare; requiring owners, trainers and exhibitors to know and follow their sanctioning organization's rules, and to work within industry regulations in all equestrian competition; and reviewing, revising and developing competition rules and regulations that protect the welfare of the horse.





### Equestrian Canada Rule Amendment

Per Article A801, every entry at an EC-sanctioned competition shall constitute an agreement by the person responsible that the owner, lessee, trainer, manager, agent, coach, driver or rider and horse shall be subject to the EC constitution and all rules of EC and any additional rules set by the competition. It is the responsibility of all individuals participating in any capacity in EC-sanctioned competitions to be knowledgeable regarding the EC constitution and the applicable rules of EC and the additional rules, if any, imposed by the competition.

Do not participate in this EC- sanctioned competition in any capacity if you do not consent to be bound by the constitution and rules of EC and any additional rules imposed by the competition.

### Membership and Passport Requirements

Equestrian Canada (EC) has stringent rules and regulations regarding membership and Horse Recording requirements. In light of this, competitors and horse owners will be required to provide proof of their EC, Ontario Equestrian ("OE"), and Trillium Hunter Jumper Association ("THJA") Membership Cards and proof of payment of updated sport licenses at each show office.

A Temporary Sport License and/or Temporary Horse Recording will be required to be purchased at each show if proof of membership is unavailable (actual cards or receipts). No points will be accumulated on a temporary license.



### Central West Zone Code of Conduct

All members, coaches, parents and visitors should conduct themselves in a manner which reflects the values and ethics of Equestrian Canada. Anyone who engages in or is party to conduct inappropriate to a show manager, official, staff, volunteer, competitor, or any person on the show grounds will be reported to the Show Steward. The Show Steward has the authority to uphold the code of ethics and may ask the offending party to leave if necessary, and will include the violation in their show report to Equestrian Canada. The Code of Conduct is also available on the show entry form at [www.centralwestzone.com](http://www.centralwestzone.com).

We believe that the equestrian sport is based on a partnership between horse and human athlete.

We believe that it is the right and responsibility of Equestrian Canada to set standards in matters of ethics, sportsmanship and the welfare of the horse and in all matters under its jurisdiction.





## Division Specifications

### Limitations

Horses are limited to 2 hunter divisions, the hack division, and the appropriate equitation or medal classes.

Horses are limited to 2 jumper divisions, the hack division, and the appropriate equitation or medal classes.

Horses may compete in 1 hunter division, 1 Jumper Division, the hack division, and their appropriate equitation and medal classes.

Miscellaneous Classes are not included in these limitations. Be sure to check the horseshow prize list for those limitations

### Equitation

Equitation is judged on rider ability. The rider competes either over fences or on the flat and they are judged on both their position and their correct use of the aids to produce an accurate ride. Conservative, traditional attire is required. Gloves are expected. Black or brown smooth leather half chaps are permissible providing they match the boot color. Only approved helmets of a conservative colour are allowed. See Equestrian



For show purposes, ponies are to be divided as follows:

"A" ponies – over 13.2 hands, but not to exceed 14.2 hands

"B" ponies – over 12.2 hands, but not to exceed 13.2 hands

"C" ponies – do not exceed 12.2 hands

Trillium "A" Equitation Over Fences – Open to Large Pony Division riders with fences at 2'9"; Children's Division riders with fences at 3'; and Trillium Low/High division riders with fences at 3'3".

Adult Equitation – Adult Equitation Riders must be Amateurs.

A horse or pony ridden in an Equitation Class Over Fences, or in the Jumper Medal Class may only be ridden in that class by one rider.

In the event that a rider competes in two different divisions requiring them to jump different heights, it will be their choice which height they will jump for the equitation over fences class.

Horses and riders are required for formal presentations at the Championship Show.



### Acronyms

O/F - Over Fences

U/S - Under Saddle (Flat)

Jr. - Junior

Am. - Amateur

Eq. - Equitation

### Guide for Junior Ages (from EC Rule Book)

Junior "A" – a rider who is 15, 16, 17 on January 1st  
May not ride "B" or "C" ponies.

Junior "B" – a rider who is 12, 13, 14 on January 1st.  
May ride "A", "B", or "C" ponies.

Junior "C" -a rider who is under 12 as on January 1st  
May ride "A", "B", or "C" ponies.



### **Trillium Hunter Medals**

Originally created in the image of the Jump Canada Medal, the Trillium Medal Class has evolved into a specialty class unique to the Trillium Circuit. Where a contradiction exists, these specifications supersede those of the EC Jump Canada Medal. These classes are open to Junior and Amateur riders only. Riders may walk the course. Eligibility as per individual hunter division specs for that particular medal.

*First Phase - Over Fences:* Figure eight course of not less than eight jumps. Class is judged in accordance to Article G1008 Class Routine Over Fences. No additional tests over fences are permitted.

*Second Phase - On The Flat:* All contestants, or a minimum of ten shall be called back to perform at a walk, trot and canter. From a maximum of four competitors, the judge may call for a minimum of two or more requirements from Article G1009 Tests (Equestrian Canada Rule Book Section G)

*Scoring:* Medal classes will be judged 60% over fences and 40% on the flat.

*Tack & Equipment:* All tack and equipment remains the same for both phases. Restrictions as per Article G1003 through G1005 (Equestrian Canada Rule Book Section G).

My First Trillium Medal Class - Short Stirrup: Fences 21"

Modified Children's Hunter:

- Fences 2'9"

Modified Amateur Hunter Medal:

- Fences 2'9"

Children's Hunter Medal:

- Fences 3'

### **Pony Classification**

"A" ponies – over 13.2 hands, but not to exceed 14.2 hands

"B" ponies – over 12.2 hands, but not to exceed 13.2 hands

"C" ponies – do not exceed 12.2 hands

### **Hunter Divisions**

A hunter is judged on performance, style of jumping and movement. Judges are looking for the athletic ability of the animal both over fences and under saddle.

#### **Short Stirrup Division**

Fences not to exceed 21"

Open to "C" riders. Fences will not exceed 21 inches and the course will be comprised of a maximum of eight fences. Course to consist of verticals only, no oxers. Short stirrup riders may not enter any other classes except for "C" Equitation on the flat. Open to both horses and ponies, but lines (distances) will not be adjusted. Ideally, horse and rider combination are able to ride all lines with the same consistency in rhythm and pace. In the event that a Short Stirrup rider has two mounts, the second mount must be jogged and flatted by another rider who is eligible for the Short Stirrup division. Attire as per EC Article G109.

#### **Small Pony Hunter Division**

Fences 2'3"

Open to ponies not exceeding 12.2hh. Small pony riders must be Junior B or Junior C riders. (See Equitation Rules). Judges look for a rider to be suitably mounted.

#### **Medium Pony Hunter Division**

Fences 2'6"

Open to ponies exceeding 12.2hh, but not exceeding 13.2hh. Medium pony riders must be Junior B or Junior C riders. (See Equitation Rules). Judges look for a rider to be suitably mounted.

#### **Large Pony Hunter Division**

Fences 2'9"

Open to ponies exceeding 13.2hh, but not exceeding 14.2hh. Large pony riders can be ridden by any of Junior A, B or C riders (See Equitation Rules). Judges look for a rider to be suitably mounted.



### **Low/High Hunter Development Division**

Fences 2'6" and 2'9"

This division is open to all horses. No ponies are permitted. Horse and rider combinations may only cross enter to the 2'6" Children's or 2'6" Amateur Hunter divisions, the Modified Child/Adult Hunter Divisions, the Hack Division, and their age appropriate Equitation on the Flat. Competitors may move both up and down in heights between shows, but competitors may not change heights once the division has started.

### **2'6" Children's Division**

Open to juniors riding horses. Riders are not eligible to compete in any division with a height over 2'6", except for the Low/High Hunter Development Division. Horse/rider combinations are permitted to also show in the hack division and age appropriate equitation on the flat. (Can be run combined with 2'6" Amateur Division throughout the season, but will be separate at Championship Show)

### **2'6" Amateur Division**

Open to adult amateurs riding horses. Riders are not eligible to compete in any division with a height over 2'6", except for the Low/High Hunter Development Division. Horse/rider combinations are permitted to also show in the hack division and age appropriate equitation on the flat. (Can be run combined with 2'6" Children's Division throughout the season, but will be separate at Championship Show).

### **Modified Child Hunter Division**

Fences 2'9"

Open to juniors riding horses. A horse/rider combination may only cross enter into the Hack Division, the Low/High Hunter Development Division, the Modified Children's Trillium Medal, and their age appropriate Equitation on the Flat class. The rider may enter any other division or class at that show on another horse or pony. The horse may be shown in another class/division with another rider. This division may be combined with the Modified Adult Hunter Division throughout the season, but will be split at the Championship Show.

### **Modified Adult Amateur Hunter Division**

Fences 2'9"

Riders in this division must hold a current Amateur card. A horse/rider combination may only cross enter into the Hack Division, the Low/High Hunter Development Division, the Modified Adult Trillium Medal, and their age appropriate Equitation on the Flat class. The rider may enter in any other division or class at that show on another horse or pony. The horse may be shown in another class/division with another rider. This division may be combined with the Modified Child Hunter Division throughout the season, but will be split at Championship Show.

### **Children's Hunter**

Fences 3'0"

Open to horses ridden by a junior. As per Equestrian Canada Rules Article G307.

### **Low Hunter**

Fences 3'

Open to all horses.

### **Adult Amateur Hunter**

Fences 3'

All adults competing in amateur classes at EC-sanctioned competitions must possess a current EC amateur card, which is purchased annually at the price listed in the EC Schedule of Fees. Adult Amateur riders may enter the Low Option of the Trillium Hunter Division and compete at 3'3".

### **Trillium Hunter – Low/High**

Fences 3'3" and 3'6"

The low option of this division is open to all riders. The high option of this division is not open to Children's or Adult Amateur Division riders.

### **Hack Division**

Horses showing in the hack division may be of any breed or combination of breeds. Ponies are not permitted in this division. The division shall consist of Road, Show and Pleasure Hack.



Additional requirement for the Road Hack class will be the demonstration of a strong trot. Additional requirements for the Show Hack class will be collected and extended gaits. Both Road and Show hack classes may be required to Hand Gallop (never more than 8 horses at one time). Pleasure hack will never be required to Hand Gallop. Martingales, breastplates, boots or any kind and/or bandages are not permitted. Drop and flash nose bands are prohibited. Brow bands shall be leather or any description but not solid white, colored or sequined. Whips are not permitted in any hack class. In the event of a tie, horses shall be shown in hand and judged on conformation.

### **Modified Pony Hunter**

Open to all ponies. Ponies will jump 3" below their regular pony hunter division height and distances will be adjusted according to pony size as per EC Rules G306.6.A. Age restrictions as per EC Rules G306.1. Pony/rider combinations may not cross enter into any other classes or divisions requiring them to jump.

Small – Not to exceed 2'

Medium – Not to exceed 2'3"

Large – Not to exceed 2'6"



### **Jumper Divisions**

Horses are to be judged only on performance over a pre-designated course. The competition management must ensure that a plan giving precise detail of the course is posted at least 30 minutes before start of competition. Jumper tack as per Equestrian Canada Rules.

#### **0.90m Training Jumper Division**

Open to all horses and ponies. Maximum height of fences .90m. Run under Table A & FEI Article 238.2.2.2)

#### **1.0m Jumper Division**

Open to all horses, and to ponies who are ridden by juniors. Adults are not permitted to ride ponies in this division. Maximum height of fences 1 Metre. Run under Table A & FEI Article 238.2.2.2.

#### **1.10m Trillium Jumper Division**

Standing Martingales and draw reins are not allowed for any competitor in this division. Junior/Amateurs can cross enter into this division.





### Trillium Jumper Medal Class

Fences not to exceed 1.0 M"

Originally created on the image of the CET Medal, the Trillium Jumper Medal has evolved into a specialty class unique to the Trillium Circuit. These specifications supersede those of the Equestrian Canada CET medal. The class will have both a jumping phase and a flat phase. This class is open to Junior and Amateur riders only. It is judged as an equitation class with both a jumping and flat phase. Jumping phase to be ridden first.

*Tack & Equipment:* All tack and equipment remains the same for both phases. Only running martingales used in the conventional manner are permitted. No standing martingales, draw reins or restricted running martingales are permitted. Conservative coloured headgear (As per Article G1109) with no additional adornment. Stirrups are restricted as per Article G1109-G)

*Judging:* Jumping phase to be conducted under current Equestrian Canada jumper rules. In addition, the class will be judged on seat, hand, guidance and control. Jumper Medal to be judged 60% over fences and 40% on the flat.

*Jumping Phase:* The jumping phase should be over a course of at least nine (9) fences. Fences will not exceed 3'3" in height with a spread not to exceed the height. The course must contain at least one double or triple combination with at least one spread fence. Other spread fences are required elsewhere on the course. A Liverpool is optional.



*Flat Phase -* All riders, or a maximum of twelve who complete the Jumping Phase, shall be called back to perform on the flat. During the flat phase, riders will show a working walk, the working trot sitting, the working trot rising, and showing a lengthening of stride, the working canter and the working canter showing a lengthening of stride. The working canter on the counter lead must be demonstrated for at least one full revolution of the ring in each direction. The top four riders in the flat phase may be asked to complete a short test determined by the judge. When this test is being ridden, the riders will turn their backs so they cannot watch the other competitors.





### Pricing and Rules

The following fees apply to most 2019 Central West Trillium Circuit Shows. Stall fees, fees for non-core classes, and other miscellaneous fees may differ between shows. Please see show schedules for additional fees. HST is not included and will be added to fees where applicable.

Entry Fees (HST not included):

Hunter & Hack Classes:	\$25.00/class
Jumpers:	\$25.00/class
Equitation & Medal:	\$25.00/class
Un-Judged Schooling	\$20.00
Post Entry Fee:	\$40.00
Administration Fee:	\$25.00
OEF Drug Fees:	\$7.00
Trillium Fund Fees:	\$6.00
Scratch Fee	\$40.00

Note: Hunter Divisions at indoor competitions will consist of 2 O/F classes and 1 U/S class. Hunter divisions at outdoor competitions will consist of 3 O/F classes and 1 U/S class.

PRIZE LIST: Rating T-1

Ribbon placing as per show management.

Prize Money (unless otherwise noted):

\$35, \$30, \$28, \$25, \$25 (O/F)

\$30, \$28, \$25, \$22, \$22 (U/S)

All competitions contained herein are sanctioned as Silver competition members of Equestrian Canada, 308 Legget Drive, Suite 100, Ottawa, ON K2K 1Y6 and are governed by the rules of EC.

Every class offered herein is covered by the rules and specifications and will be judged in accordance with the EC rule book

### 2019 Show Dates

JD Leap Into Spring A	April 6-7, 2019
JD Leap Into Spring B	April 13-14, 2019
Hamilton Hunt Trillium Show A	April 19-20, 2019
Hamilton Hunt Trillium Show B	April 26-28, 2019
Fox Run Trillium Show	May 10-12, 2019
Meadowlarke North Trillium Show	May 24-26, 2019
Waymark Farms Trillium Show	June 7-9, 2019
Twinholm Trillium Show	June 21-23, 2019
Camberwell Equestrian Trillium Show	July 5-7, 2019
Red Ribbon Stables Trillium Show	July 21-23, 2019
Parish Ridge Stables Trillium Show	July 26-28, 2019
Vanbrook Equestrian Trillium Show	August 9-11, 2019
Iron Horse Trillium Show	August 16-18, 2019
Trillium Championships	August 28- September 1, 2019



## JD LEAP INTO SPRING TRILLIUM SHOW A/B

**SHOW DATES: APRIL 6-7, 2019/APRIL 13-14, 2019**  
**SHOW MANAGER: DOROTHY LOCKERBIE**  
**CONTACT: 905-379-6451**

### SATURDAY APRIL 6th - 7:00 AM START

- \*Short Stirrup Hunter Division
- \*My First Medal
- \*Modified Pony Division  
(L/M/S)
- \*Small Pony Hunter Division
- \*C Equitation Over Fences  
(To Run With Division)
- \*C Equitation On The Flat
- \*Medium Pony Division
- \*B Equitation Over Fences  
(To Run With Division)
- \*B Equitation On The Flat
- \*Large Pony Division
- \***Logan's Leadline Class**  
(Open To Riders 10 & Under)

### SUNDAY APRIL 7th - 7:00 AM START

- \*Low Hunter Division
- \*A Equitation On The Flat
- \*Children's Hunter Division
- \*A Equitation Over Fences  
(To Run With Division)
- \*Children's Medal (To Run With Division)
- \*Adult Amateur Hunter Division
- \*Adult Equitation Over Fences  
(To Run With Division)
- \*Adult Equitation On The Flat
- \*Hi/Lo Trillium Hunter Division

### SATURDAY APRIL 13TH - 7AM START

- \*2'6" Children's Hunter Division
- \*2'6" Amateur Hunter Division
- \*2'6"-2'9" Hunter Development Division
- \*Modified Children's Hunter Division
- \*Modified Children's Medal  
(To Be Run With Division)
- \*Modified Adult Hunter Division
- \*Modified Adult Medal  
(To Run With Division)
- \*\*\***Horse Model**

### SUNDAY APRIL 14TH - 7:00 AM START

- \*Hack Division  
(Road/Show/Pleasure)
- \*.90 M Clear Round Class  
(To Be Run With The First Class Of The .90 Jumpers)
- \*.90 M Training Jumper Division
- \*1.0 M Clear Round Class
- \*1.0 M Jumper Division
- \*Jumper Medal (1.0 M)
- \*1.10 M Trillium Jumper Division

**All entries submitted to:**  
**www.showmate.net**

## JD LEAP INTO SPRING TRILLIUM SHOW A/B

### Pricing and Rules:

- Entry Fees: (HST not included)
- Clear Round Jumper Class: \$25.00
- Unjudged Hunter School: \$20.00
- Scratch Fee: \$40.00
- Stall Fees/Day: \$50.00

**Limited Stall Availability – Must be booked in advance.**

**No Refunds on Stalls & Bedding is NOT included\***

Cheques are made payable to: **JD SHOW MGMT**

Scratched entries will pay the scratch fee, in full, with the administration fee. If the entry does not scratch with the show office then full entry fees will apply. See specs on pg.9 All entries (including faxed entries) must be received prior to the closing date otherwise post entry fees will apply. Full payment/open cheque required to receive show number(s). Un-judged Schooling available (see Page 9 for details). Show schedule is subject to change without notice at management discretion. No dogs please.

Hunter Classes: 2 O/F & 1 U/S

Jumper Classes: 3 O/F per Division

**LOCATION OF SHOW:** *Iron Horse Equestrian Complex*  
 5244 No. 1 Sideroad,  
 Burlington ON, L7M 1T9  
 Google: C5GJ+C3 Burlington, Ontario

### OFFICIALS:

**JUDGES:** *WEEK 1:* Sue Ashe  
*WEEK 2:* Peter Stoeckl

### COURSE DESIGNER:

Jeremy Denouden

**STEWARD:** Mike Schram

**INGATE:** Laura Weller

**SHOW SECRETARY:** Dorothy Lockerbie

**TIMER:** Dave Christie

**MEDIC:** Medivent

**ENTRIES CLOSE: MARCH 31, 2019**



## HAMILTON HUNT TRILLIUM SHOW A/B

APRIL 19-20/26-28 - SHOW MANAGER: CHELSEY OVERELL  
CONTACT FOR SHOW: 905-869-3099 chelsey.overell.hh1@gmail.com

### FRIDAY APRIL 19th - 7:30 AM START

\*Small Pony Division  
\*C Equitation On The Flat  
\*C/B Equitation Over Fences

(C/B - O/F To Run With Divisions)

\*B Equitation On The Flat  
\*Medium Pony Division  
\*Large Pony Division  
\*Modified Pony Division  
(L/M/S)

### SATURDAY APRIL 20th - 7:30 AM START

\*Short Stirrup Division  
\*My First Medal  
\*Modified Children's  
Division  
\*Modified Children's Medal  
(To Run With Division)  
\*A Equitation On The Flat  
\*A Equitation O/F (To Run  
With The Division - Larges  
To Go First)  
\*Children's Hunter  
\*Children's Medal

### FRIDAY APRIL 26th - 7:30 AM START

\*Hack Division  
\*2'6"-2'9" Hunter Development  
Division

\*2'6" Children's Hunter  
Division  
\*2'6" Amateur Hunter  
Division

### SATURDAY APRIL 27th - 7:00 AM START

\*Low Hunter Division  
\*Adult Amateur Hunter  
Division  
\*Adult Equitation Over  
Fences (Run with Division)  
\*Adult Amateur Equitation  
On The Flat  
\*Modified Adult Division  
\*Modified Adult Medal  
(Run with Division)  
\*Hi/Low Trillium Hunters

### SUNDAY APRIL 28TH - 7:30 AM START

\*Clear Round Class  
(To Be Run With The First  
Class Of The .90 Jumpers)  
\*.90 Training Jumper  
Division  
\*1.0M Jumper Division  
\*Jumper Medal (1.0 M)  
\*1.10M Trillium Jumper Division  
All entries submitted to:  
www.showmate.net

## HAMILTON HUNT TRILLIUM SHOW A/B

Pricing And Rules (See Page )

Administration Fee:	\$25.00
Scratch Fee:	\$40.00
Clear Round Jumper:	\$22.00
Stall Fees:	\$50.00/Day

**Cheques are made payable to: The Hamilton Hunt**

Hunter Classes: 2 O/F & 1 U/S

Jumper Classes: 3 O/F Per Division

Stalls must be booked in advance. No refunds on stalls. Bed-  
ding not included.

Scratched entries will pay the scratch fee , in full, with the  
administration fee. If the entry does not scratch with the show  
office then full entry fees will apply. See specs on pg.9

All entries (including faxed entries) must be received prior  
to the closing date otherwise post entry fees will apply. Full  
payment/open cheque required to receive show number(s).Un-  
judged schooling available (see page 9 for details).

Show schedule is subject to change without notice at manage-  
ment discretion. No dogs please.

**LOCATION OF SHOW:** Iron Horse Equestrian Complex

5244 No. 1 Sideroad,

Burlington ON, L7M 1T9

Google:C5GJ+C3 Burlington, Ontario

### OFFICIALS:

**JUDGE:** Christine Reupke

**COURSE DESIGNER:**

Mike Giovinazzio

**STEWARD:** Sharon Macbay

**INGATE:** Laura Weller

**SHOW SECRETARY:** Lisa Mitchell

**TIMER:** Dave Christie

**MEDIC:** Medivent

**ENTRIES CLOSE: APRIL 15, 2019**



## FOX RUN TRILLIUM SHOW

**MAY 10-12, 2019 - SHOW MANAGER: DIETER WERNER**  
**CONTACT: 905-628-3020 - email: fox.run@explornet.com**

### FRIDAY MAY 10th -

#### 7:30 AM - START - RING 1

- \*Short Stirrup Division
- \*My First Medal
- \*2'6" Children's Hunter Division
- \*2'6" Amateur Hunter Division

#### 7:30 AM START - RING 2

- \*2'6"-2'9" Hunter Development Division
- \*Modified Children's Hunter Division
- \*Modified Children's Medal (With Division)
- \*Low Hunter Division
- \*Hi/Lo Trillium Hunter Division

### SATURDAY MAY 11TH,-

#### 7:30 AM START - RING 1

- \*Small Pony Division
- \*C Equitation Over Fences (To Be Run With Division)
- \*Medium Pony Division
- \*B Equitation Over Fences (To Be Run With Division)
- \*C/B Equitation On The Flat
- \*Modified Pony Hunter Division

### SATURDAY MAY 11th -

#### 7:30 AM - START - RING 2

- \*Children's Hunter Division
- \*A Equitation Flat
- \*A Equitation Over Fences
- \*Children's Medal
- \*Large Pony Hunter Division

### SUNDAY MAY 12TH -

#### 7:30 AM START -RING 1

- \*Hack Division
- \*Modified Adult Hunter Division
- \*Modified Adult Medal
- \*Adult Amateur Hunter Division
- \*Adult Equitation Over Fences
- \*Adult Equitation On The Flat

### SUNDAY MAY 12TH -

#### 7:00 AM START - RING 2

- \*.90 Training Jumper Division
- \*1.0M Jumper Division
- \*Jumper Medal (1.0 M)
- \*1.10M Trillium Jumper Division

**All entries submitted to:**  
**www.showmate.net**

## FOX RUN TRILLIUM SHOW

Pricing and Rules (see page )

Administration Fee: \$25.00

Scratch Fee: \$40.00

**NO STALLS AVAILABLE**

**Cheques are made payable to: Fox Run Horse Shows**

Hunter Classes: 3 O/F & 1 U/S

Jumper Classes: Table A Immed. Jo/ Speed/Power & Speed

Scratched entries will pay the scratch fee , in full, with the administration fee. If the entry does not scratch with the show office then full entry fees will apply. See specs on pg.9 All entries (including faxed entries) must be received prior to the closing date otherwise post entry fees will apply. Full payment/open cheque required to receive show number(s) Un-judged Schooling available (see Page 9 for details). Show schedule is subject to change without notice at management discretion.

Dogs on leashes please.

**LOCATION OF SHOW:** Fox Run Stables

840 Valens Road, RR#1

Troy ON, L0R 2B0 T

Telephone: 905-628-3020

Google map: 8V5V+X4, Hamiton ON

### OFFICIALS:

**JUDGE(S):** Janet Dwyer & Deanna Kennington

**STEWARDS:** Susan Evans

**COURSE DESIGNER:** Mike Giovinazzio

**INGATE:** Stacey French & Brianne Service

**SHOW SECRETARY:** Jen Werner

**TIMER:** Dave Christie

**MEDIC:** Medivent

**ENTRIES CLOSE: MAY 6, 2019**



## MEADOWLARKE NORTH TRILLIUM SHOW

**MAY 24-26, 2019 - SHOW MANAGER: STACEY FRENCH**  
**CONTACT: 905-821-0419**

### FRIDAY MAY 24th - 7:30 AM START - RING 1

\*2'6"-2'9" Hunter Development  
Division  
\*2'6" Adult Amateur Hunter  
Division  
\*Hi/Lo Trillium Hunter Division

### 8 AM START - RING 2

\*Modified Children's Hunter  
Division  
\*Modified Children's Medal  
(With Division)  
\*2'6" Children's Hunter  
Division  
\*Hack Division

### SATURDAY MAY 25TH,- 7:30 AM START - RING 1

\*B Equitation On The Flat  
\*B Equitation Over Fences  
(Smalls After Flat -Rest With Division)  
\*Medium Pony Division  
\*Large Pony Division  
\*A Equitation On The Flat  
\*A Equitation Over Fences  
(To Run With Divisions)  
\*Children's Hunter Division  
\*Children's Medal

### 8:00 AM - START - RING 2

\* Short Stirrup Division  
\*My First Medal  
\*C Equitation On The Flat  
\*Small Pony Hunter Division  
\*C Equitation Over Fences  
\*Modified Pony Hunter  
Division

### SUNDAY MAY 26TH - 7:30 AM START - RING 1

\*Low Hunter Division  
\*Modified Adult Hunter Division  
\*Modified Adult Medal  
(To run with Division)  
\*Adult Amateur Hunter Division  
\*Adult Equitation Over Fences  
(To run with Division)  
\*Adult Equitation On The Flat

### SUNDAY MAY 26TH - 7:30 AM START - RING 2

\*Clear Round Jumper (.90M)  
\*.90 M Training Jumper Division  
\*1.0 M Jumper Division  
\*Jumper Medal (1.0 M)  
\*1.10 M Trillium Jumper  
Division

**All entries submitted to:**  
**www.showmate.net**

## MEADOWLARKE NORTH TRILLIUM SHOW

Pricing and Rules (see page )

Administration Fee: \$25.00  
Scratch Fee: \$40.00  
Clear Round: \$20.00  
Stall Fees: \$40.00/day - NON REFUNDABLE

**Cheques are made payable to: Meadowlarke Stables Inc.**

Hunter Classes: 3 O/F & 1 U/S

Jumper Classes: Table A Immed. Jo/Speed/Power & Speed

Stalls must be booked in advance. **No refunds on stalls.**

Scratched entries will pay the scratch fee , in full, with the  
administration fee. If the entry does not scratch with the  
show office then full entry fees will apply. See specs on pg 9.

All entries must be received prior to the closing date other-  
wise post entry fees will apply. Full payment/open cheque  
required to receive show number(s).Un-judged schooling  
available (see page 9 for details).Show schedule is subject to  
change without notice at management discretion.

All dogs must be leashed.

Location of show: Meadowlarke Stables (North)  
5154 Third Line, Acton ON, L7J 2L8  
Telephone: 905-821-0419  
www.meadowlarkestables.com  
Google map: MWJ5+3P, Erin, Ontario

### OFFICIALS:

**JUDGE(S):** Christine Renwick & Susan Legge

**STEWARDS:** Jane Hetherington

**COURSE DESIGNER:** Jessica Hunter

**INGATE:** Paula Turcotte

**SHOW SECRETARY:** Anthea Larke

**TIMER:** Dave Christie

**MEDIC:** Medivent

**ENTRIES CLOSE: MAY 20, 2019**



## WAYMARK FARMS TRILLIUM SHOW

**JUNE 7-9, 2019 - SHOW MANAGER: MISSY TODD**  
**CONTACT DURING SHOW: 519-572-2996**

### FRIDAY JUNE 7-

#### 8 AM START RING 1

- \*Modified Children's Hunters Division
- \*Modified Children's Medal
- \*Modified Adult Hunter Division
- \*Modified Adult Medal

#### RING 2 - 8 AM START

- \*.90M Training Jumper Division
- \*Jumper Medal (1.0 m)
- \*1.0 M Jumper Division
- \*1.10 M Trillium Jumper Division

### SATURDAY JUNE 8 - 8 AM START - RING 1

- \*Short Stirrup
- \*My First Medal
- \*Small Pony Hunter Division
- \*C Equitation Over Fences (C/B O/F to be run with division)
- \*C Equitation on the Flat
- \*B Equitation on the Flat
- \*B Equitation Over Fences (Horses, Large Ponies, Mediums)
- \*Medium Pony Hunter Division
- \*Modified Pony Division

#### RING 2 - 8 AM START

- \*Large Pony Hunter Division
- \*A Equitation on the Flat

- \*A Equitation Over Fences (O/F to be run with division)
- \*Children's Hunter Division
- \*Children's Medal
- \*Hi/LoTrillium Hunter Division

### SUNDAY JUNE 9 - 8 AM START RING 1

- \*2'6" Children's Hunter Division
- \*2'6" Amateur Hunter Division

#### RING 2 - 8 AM START

- \*Hack Division
- \*2'6"-2'9" Hunter Development Division
- \*Low Hunter Division
- \*Adult Amateur Hunter Division
- \*Adult Equitation Over Fences (Runs with Division)
- \*Adult Equitation on the Flat

**All entries submitted to:**  
**www.showmate.net**

## WAYMARK FARMS TRILLIUM SHOW

Pricing and Rules (see page 22)

Administration Fee: \$25.00

Scratch Fee: \$40.00

Stall Fees: \$40.00/day

**Cheques are made payable to: Waymark Farms**

Hunter Classes: 3 O/F & 1 U/S

Jumper Classes: Table A Immed. Jo/Speed/Power & Speed

Stalls must be booked in advance. **No refunds on stalls.**

Scratched entries will pay the scratch fee, in full, with the administration fee. If the entry does not scratch with the show office then full entry fees will apply. See specs on pg.9

All entries must be received prior to the closing date otherwise post entry fees will apply. Full payment/open cheque required to receive show number(s). Un-judged schooling available (see page 9 for details). Show schedule is subject to change without notice at management discretion.

No dogs please.

Location of show: Waymark Farms  
867733 Township Road 10, RR#3  
Bright ON  
Google map: 7GP5+HG, Blandford ON  
Contact before show: Sue Payne 519-580-5119  
Barn: 519-632-7355

### OFFICIALS:

**JUDGE(S):** Diane Ratigan & Anne McKay

**COURSE DESIGNER:** Mike Giovinazzio

**STEWARDS:** Jane Holbrook

**INGATE:** TBA

**SHOW SECRETARY:** Susan Payne

**TIMER:** Dave Christie

**MEDIC:** Medivent

**ENTRIES CLOSE: JUNE 3, 2019**



## TWINHOLM TRILLIUM SHOW

**JUNE 21-23, 2019 @ THE ANCASTER FAIRGROUNDS-  
SHOW MANAGER: ROY FISH - CONTACT: 905-876-9142**

### FRIDAY JUNE 21ST - 7:30 AM START - RING 1 (SOUTH)

- \*Low Hunter Division
- \*Hi/Lo Trillium Hunter Division
- \*Modified Children's Hunter Division
- \*Modified Children's Medal (With Division)
- \*Hack Division (To Run In Ring Three North With First Available Judge)

### RING 2 - 7:30 AM START

- \*2'6"-2'9" Hunter Development Division (2'9" To Start)
- \*2'6" Adult Amateur Hunter Division
- \*2'6" Children's Hunter Division

### SATURDAY JUNE 22ND, - 7:30 AM START - RING 1 SOUTH

- \* Short Stirrup Division
- \*My First Medal
- \*Children's Hunter Division
- \*Children's Medal
- \*A Equitation On The Flat
- \*A Equitation Over Fences (To Run With Divisions)
- \*Large Pony Division

### RING 2 - 8:00 AM - START

- \*Small Pony Hunter Division
- \*C Equitation Over Fences
- \*C Equitation On The Flat
- \*Medium Pony Division
- \*B Equitation Over Fences
- \*B Equitation On The Flat
- \*Modified Pony Hunter Division

### SUNDAY JUNE 23RD - 7:30 AM START - RING 1 SOUTH

- \*Modified Adult Hunter Division
- \*Modified Adult Medal (To Run With Division)
- \*Adult Amateur Hunter Division
- \*Adult Equitation (Over Fences - With Division)
- \*Adult Equitation On The Flat

### SUNDAY JUNE 23RD - 7:30 AM START - NORTH RING

- \*Clear Round Jumper (.90M)
- \*.90 Training Jumper Division
- \*1.0M Jumper Division
- \*Jumper Medal (1.0 M)
- \*1.10M Trillium Jumpers

**All entries submitted to:  
www.showmate.net**

## TWINHOLM TRILLIUM SHOW

Pricing and Rules (see page 22)

Administration Fee: \$25.00

Scratch Fee: \$40.00

Stall Fees: \$55.00/day -includes one bag of shavings

**Cheques are made payable to: Twinholm Stables**

Hunter Classes: 3 O/F & 1 U/S

Jumper Classes: Table A Immed. JO/ Speed/Power & Speed

Stalls must be booked in advance. No refunds on stalls. Please contact Roy Fish to book -905-876-9142

Scratched entries will pay the scratch fee, in full, with the administration fee. If the entry does not scratch with the show office then full entry fees will apply. See specs on pg. 9

All entries (including faxed entries) must be received prior to the closing date otherwise post entry fees will apply. Full payment/ open cheque required to receive show number(s). Un-judged Schooling available (see Page 9 for details). Show schedule is subject to change without notice at management discretion. No dogs please.

**Please enter Fairgrounds from Gate #3 only— all cars & trailers**

**LOCATION OF SHOW: Twinholm Stables @ The Ancaster Fairgrounds**

**630 Trinity Road, RR#1**

**Jerseyville ON, L0R 1R0 GOOGLE: 5XQ4+CV**

**TIP INCENTIVES - the following divisions will be offering T.I.P. (Thoroughbred Incentive Program) awards - horses must have a valid TIP number which can be obtained by www.Tjctip.Com: 2',6/2'9 Childrens, Adults & Development Hunters; 3' Childrens, Adults & Low Hunters; Hack division; Young jumper-high point; & jumper -high point**

### OFFICIALS:

**JUDGE(S):** Val Sinke & Susan Legge

**STEWARDS:** Sharon Macbay

**COURSE DESIGNER:** Sue Fish

**INGATE:** Stacey French/Yvonne Busby/Chelsea Millar

**SHOW SECRETARY:** Lisa Mitchell

**TIMER:** Dave Christie

**MEDIC:** Medivent

**ENTRIES CLOSE: JUNE 17, 2019**



## CAMBERWELL EQUESTRIAN TRILLIUM SHOW

**JULY 5-7, 2019 - SHOW MANAGER: TAMMY LEBLANC**  
**CONTACT: 905-682-4062 - EMAIL: INFO@CAMBERWELL.CA**

### FRIDAY JULY 5TH -

**8 AM START**

### RING 1 -FRONT SAND RING

\*Hack Division (Road/Show/  
Pleasure)

\*2'6" Children's Hunter  
Division

\*2'6" Amateur Hunter Division

### RING 2 -8 AM START

### SIDE SAND RING

\*2'6"-2'9" Hunter  
Development Division  
(2'9" To Start)

\*Modified Children's Hunter  
Division

\*Modified Children's  
Medal (With Division)

\*Hi/Lo Trillium Hunter  
Division

### SATURDAY JULY 6TH,-7:30 AM START - RING 1- FRONT SAND RING

\* Short Stirrup Division

\*My First Medal

\*C/B Equitation O/F  
For Horses

\*C/B Equitation O/F  
For Larges

\*Small Pony Hunter Division

\*C/B Equitation O/F-Small

\*C Equitation On The Flat

\*Medium Pony Hunter  
Division

(C/B Equitation With Division)

\*B Equitation Over Fences

\*B Equitation On The Flat

\*Modified Pony Hunter  
Division

### 8:00 AM - START - RING 2 SIDE SAND RING

\*Large Pony Division

\*Modified Pony Hunter  
Division

\*A Equitation On The Flat

\*Children's Hunter Division

\*A Equitation Over Fences  
(To Run With Divisions)

\*Children's Medal

### SUNDAY JULY 7TH -8 AM START -RING 1 - FRONT SAND RING

\*.90 M Training Jumper  
Division

\*1.0 M Jumper Division

\*Jumper Medal (1.0 M)

\*1.10 M Trillium Jumper  
Division

### 8 AM - START - RING 2 SIDE SAND RING

\* Low Hunter Division

\*Adult Amateur Hunter  
Division

\*Adult Equitation O/F  
(To Run With Division)

\*Adult Equitation on the Flat

\*Modified Adult Hunter  
Division

\*Modified Adult Medal

## CAMBERWELL EQUESTRIAN TRILLIUM SHOW

Pricing And Rules (See Page )

Administration Fee: \$25.00

Scratch Fee: \$40.00

Stall Fees: \$40.00/Day

Overnight Stall: \$40.00

**Cheques Are Made Payable To: Camberwell Stables (Debit  
Is Available)**

Hunter Classes: 3 O/F & 1 U/S

Jumper Classes: Table A Immed. Jo/ Speed/Power & Speed

**Stalls Must Be Booked In Advance. No Refunds On Stalls.**

Scratched entries will pay the scratch fee , in full, with the  
administration fee. If the entry does not scratch with the show  
office then full entry fees will apply. See specs on pg.9

All entries (including faxed entries) must be received prior to  
the closing date otherwise post entry fees will apply. Full pay-  
ment/open cheque required to receive show number(s).

Non-judged schooling available - (see page 9 for details).

Show schedule is subject to change without notice at manage-  
ment discretion. No dogs please.

**Location of show:** Camberwell Equestrian  
2745 Wessel Drive, St.Catherines ON  
Google: 4M3M+4C Pelham, Ontario

### OFFICIALS:

**JUDGE(S):** Julie Mcconnell & Sharon Macbay

**STEWARDS:** Susan Evans

**COURSE DESIGNER:** Sue Fish

**INGATES:** TBA

**SHOW SECRETARY:** Lisa Mitchell

**TIMER:** Dave Christie

**MEDIC:** Medivent

**Entries to:** showmate.net

**ENTRIES CLOSE: JULY 3RD, 2019**

**(HACKING IN THE RINGS IS PERMITTED FROM 7:15AM-7:45 AM -  
HUNTERS ONLY )**



## RED RIBBON STABLES TRILLIUM SHOW

**JULY 19-21, 2019 - SHOW MANAGER: LESLIE MCCORMICK**  
**CONTACT: 905-687-1669 - EMAIL - REDRIBBONSTABLES@ZERO.NET**

### FRIDAY JULY 19TH - 8 AM START RING 1

- \*Modified Adult Hunter Division
- \*Modified Adult Medal (To Run With Division)
- \*Modified Children's Hunter Division
- \*Modified Children's Medal (To Run With Division)

### 8 AM START - BAYHAMPTON RING 2 -

- \*2'6"-2'9" Hunter Development Division (2'9" To Start)
- \*2'6" Children's Hunter Division
- \*2'6" Amateur Hunter Division

### SATURDAY JULY 20TH, -8 AM START - RING 1-

- \* Large Pony Hunter Division
- \*Children's Hunter Division
- \*A Equitation O/F (With Divisions)
- \*A Equitation On The Flat
- \*Children's Medal
- \*Hi/Lo Trillium Hunter Division

### 8 AM -START- BAYHAMPTON RING 2

- \*Short Stirrup Division
- \*My First Medal
- \*Small Pony Hunter Division

- \*C/B Equitation O/F (With Division)
- \*Medium Pony Hunter Division
- \*C/B Equitation (With Division)
- \*B Equitation On The Flat
- \*Modified Pony Hunter Division

### SUNDAY JULY 21ST - 8 AM START - RING 1

- \*Hack Division
- \*Low Hunter Division
- \*Adult Amateur Hunter Division
- \*Adult Equitation Over Fences (With Division)
- \*Adult Amateur Equitation On The Flat

### 7:30 AM START - BAYHAMPTON RING 2 -

- \*.90 Training Jumper Division
- \*1.0M Jumper Division
- \*Jumper Medal (1.0M)
- \*1.10M Trillium Jumper Division

HACKING IS PERMITTED IN  
THE HUNTER RINGS FROM  
7:30 AM TO SHOW START

**All entries submitted to:**  
**www.showmate.net**

## RED RIBBON STABLES TRILLIUM SHOW

Pricing And Rules (See Page )

Administration Fee: \$25.00

Scratch Fee: \$40.00

Stall Fees: \$45.00/Day

**Cheques are made payable to: Red Ribbon Stables**

Hunter Classes: 3 O/F & 1 U/S

Jumper Classes: Table A Immed. JO/ Speed/Power & Speed

Stalls must be booked in advance. **No Refunds on Stalls.**

**CALL TO BOOK. Limited number available.**

Scratched entries will pay the scratch fee , in full, with the administration fee. If the entry does not scratch with the show office then full entry fees will apply. See specs on pg.9 All entries (including faxed entries) must be received prior to the closing date otherwise post entry fees will apply. Full payment/ open cheque required to receive show number(s).

Un-judged Schooling available (see Page 9 for details).

Show schedule is subject to change without notice at management discretion.

No dogs please.

**Location of show:** West Niagara Agricultural Centre  
7402 Mud Street West, Grassie ON  
Google: 4CW9+8P Grimsby, ON

### OFFICIALS:

**JUDGES:** Anne Mackay/TBA

**COURSE DESIGNER:** Susan Fish

**STEWARDS:** Susan Evans

**INGATE:** TBA

**SHOW SECRETARY:** Pat Kadachuk &  
Christina Jeffries

**TIMER:** Dave Christie

**MEDIC:** Medivent

**ENTRIES CLOSE: JULY 15, 2019**



## PARISH RIDGE STABLES TRILLIUM SHOW

**JULY 26-28, 2019 - SHOW MANAGER: JAMES PARISH**  
**CONTACT: 905-331-7176 - [www.parishridgestables.com](http://www.parishridgestables.com)**

### FRIDAY JULY 26th - 7:00 AM START - RING 1

- \*2'6"-2'9" Hunter Development Division
- \*2'6" Children's Hunter Division
- \*Hi/Lo Trillium Hunter Division

### RING 2 - 7:30 AM START

- \*Modified Children's Hunter Division
- \*Modified Children's Medal  
(To Run With Division)
- \*Modified Adult Hunter Division
- \*Modified Adult Medal  
(To Run With Division)

### SATURDAY JULY 27TH - 7:30 AM START -RING1

- \*Short Stirrup Division
- \*My First Medal
- \*C/B Equitation O/F  
Horse Height
- \*C/B Equitation O/F -  
Large Height
- \*Small Pony Division  
(C/B Equitation With Division)
- \*C Equitation On The Flat
- \*B Equitation On The Flat
- \*Medium Pony Hunter Division  
(C/B Equitation With Division)
- \*Modified Pony Division

### RING 2 - 7:30 AM START

- \*Large Pony Hunter Division  
(A Equitation O/F With Division)
- \*A Equitation On The Flat
- \*Children's Hunter Division  
(A Equitation O/F With Division)
- \*Children's Medal

### SUNDAY JULY 28th - RING 1 7:30 AM START

- \*Low Hunter Division
- \*Adult Amateur Hunter Division
- \*Adult Equitation Over  
Fences (With Division)
- \*Adult Amateur Equitation  
On The Flat
- \*2'6" Amateur Hunter Division

### RING 2 -7:30 AM START

- \*Hack Division
- \*.90 Training Jumper  
Division
- \*Jumper Medal (1.0 M)
- \*1.0M Jumper Division
- \*1.10M Trillium Jumper  
Division

**HACKING IN THE HUNTER RINGS IS  
PERMITTED IN THE MORNING - 6:30 AM  
UNTIL 7:30 AM**

**All entries to:  
[www.showmate.net](http://www.showmate.net)**

## PARISH RIDGE STABLES TRILLIUM SHOW

Pricing and Rules (see page )

Administration Fee:	\$25.00
Scratch Fee:	\$40.00
Stall Fees: (box)	\$75.00/day
Stall Fees: (standing)	\$65.00/day

**Stalls must be booked in advance. No Refunds on Stalls.**  
**Limited number available. CALL TO BOOK DIRECTLY.**  
**Cheques are made payable to: Parish Ridge Stables**  
**(NSF-\$30 charge)**

Hunter Classes: 3 O/F & 1 U/S

Jumper Classes: Table A Immed. Jo/Speed/Power & Speed  
Scratch and Administration Fees will be applied to all  
Scratched Entries. Full entry charges will be applied if the  
show office is not notified of the scratch. See Page 9 for de-  
tails. All entries (including faxed entries) must be received  
prior to the closing date otherwise post entry fees will apply.  
Full payment/open cheque required to receive show num-  
ber(s). Un-judged Schooling available (see Page 9 for de-  
tails). Show schedule is subject to change without notice at  
management discretion. No dogs please.

**LOCATION OF SHOW:** Parish Ridge Stables  
2377 Collings Road, Burlington ON  
Google: C477+42 Burlington, Ontario

### OFFICIALS:

**JUDGES:** Christine Reupke/ Brad Gabriel

**COURSE DESIGNER:** Mike Giovinazzio

**STEWART:** Sharon Macbay

**INGATE:** TBA

**SHOW SECRETARY:** TBA

**TIMER:** Dave Christie

**MEDIC:** Medivent

**ENTRIES CLOSE: JULY 22, 2019**



## VANBROOK EQUESTRIAN TRILLIUM SHOW

**AUGUST 9-11, 2019 - SHOW MANAGER: YVONNE BUSBY**  
**CONTACT: YVONNE- 226-507-7099 OR BRITTANY-TEXT-416-569-7714**

### FRIDAY AUGUST 9th - 7:30 AM START-PLATEAU RING

- \*2'6"-2'9" Hunter Development Division
- \*2'6" Children's Hunter Division
- \*2'6" Amateur Hunter Division

### MAIN RING - 7:30 AM START

- \*Hi/Low Trillium Hunter Division
- \*Modified Adult Hunter Division
- \*Modified Adult Medal  
(To Run With Division)
- \*Modified Children's Hunter Division
- \*Modified Children's Medal  
(To Run With Division)

### SATURDAY AUGUST 10TH - 7:30 AM START - PLATEAU RING

- \*Short Stirrup Division
- \*My First Medal
- \*C Equitation On The Flat
- \*Small Pony Hunter Division  
(C/B Equitation With Division)
- \*B Equitation On The Flat
- \*Medium Pony Hunter Division  
(C/B Equitation With Division)
- \*Modified Pony Division

### RING 2 - 7:30 AM START

- \*A Equitation On The Flat
- \*Large Pony Hunter Division  
(A Equitation O/F With Division)
- \*Children's Hunter Division  
(A Equitation O/F With Division)
- \*Children's Medal

### SUNDAY AUGUST 11th - 7:30 AM START MAIN RING

- \*Hack Division
- \*Low Hunter Division
- \*Adult Amateur Hunter Division
- \*Adult Equitation Over Fences (With Division)
- \*Adult Amateur Equitation On The Flat

### CANADIAN WINTER RING - 7:30 AM START

- \*.90 Training Jumper Division
- \*Jumper Medal (1.0 M)
- \*1.0M Jumper Division
- \*1.10M Trillium Jumper Division

**HACKING IN THE HUNTER RINGS IS PERMITTED IN THE MORNING - 6:30 AM UNTIL 7:30 AM**

**ALL ENTRIES TO:**  
**www.showmate.net**

## VANBROOK EQUESTRIAN TRILLIUM SHOW

Pricing and Rules (see page )

Administration Fee: \$25.00  
Scratch Fee: \$40.00  
Stall Fees: (box) \$55.00/day  
(1 BAG included/no buckets)

\*Stalls must be booked in advance. No Refunds on Stalls. Please bring your own water & feed buckets. 1 bag of bedding supplied.

**Cheques are made payable to: Vanbrook Equestrian**

Hunter Classes: 3 O/F & 1 U/S

Jumper Classes: Table A Immed. JO/Speed/Power & Speed  
Scratched entries will pay the scratch fee, in full, with the administration fee. If the entry does not scratch with the show office then full entry fees will apply. See specs on pg.9

All entries (including faxed entries) must be received prior to the closing date otherwise post entry fees will apply. Full payment/open cheque required to receive show number(s).

Un-judged Schooling available

(see Page 9 for details). Show schedule is subject to change without notice at management discretion. No dogs please.

**LOCATION OF SHOW:** *Iron Horse Equestrian Complex*  
5244 No. 1 Sideroad,  
Burlington ON, L7M 1T9  
Google: C5GJ+C3 Burlington, Ontario

### OFFICIALS:

**JUDGES:** Jule Mcconnell/Gay Ellen Dennis

**COURSE DESIGNER:** Susan Fish

**STEWARDS:** Sharon Macbay

**INGATE:** Brittany Simmons/TBA

**SHOW SECRETARY:** Lisa Mitchell

**TIMER:** Dave Christie

**MEDIC:** Medivent

**ENTRIES CLOSE: AUGUST 5, 2019**



## IRON HORSE TRILLIUM SHOW

**August 16-18, 2019 -SHOW MANAGER - MARION SHARP**  
**CONTACT: 905-220-9493 [www.ironhorseperformance.com](http://www.ironhorseperformance.com)**

### FRIDAY AUGUST 16th - 7:30 AM START PLATEAU RING

- \*2'6"-2'9" Hunter Development Division
- \*2'6" Children's Hunter Division
- \*2'6" Amateur Hunter Division

### MAIN RING - 7:30 AM START

- \*Hi/Low Trillium Hunter Division
- \*Modified Adult Hunter Division
- \*Modified Adult Medal  
(To Run With Division)
- \*Modifed Children's Hunter Division
- \*Modified Children's Medal  
(To Run With Division)

### SATURDAY AUGUST 17TH -7:30 AM START - PLATEAU RING

- \*Short Stirrup Division
- \*My First Medal
- \*C Equitation On The Flat  
(C/B Equitation With Division)
- \*B Equitation On The Flat  
(C/B Equitation With Division)
- \*Medium Pony Hunter Division  
(C/B Equitation With Division)
- \*Modified Pony Division

### RING 2 - 7:30 AM START

- \*A Equitation On The Flat
- \*Large Pony Hunter Division  
(A Equitation O/F With Division)
- \*Children's Hunter Division  
(A Equitation O/F With Division)
- \*Children's Medal

### CANADIAN WINTER RING- CLEAR ROUND - SATURDAY ONLY

- 12:00 PM- .76 CLEAR ROUND
- 1:00 PM- .90 CLEAR ROUND
- 2:00 PM- 1.0 M CLEAR ROUND
- 3:00 PM - 1.10M CLEAR ROUND

### SUNDAY AUGUST 18th - 7:30 AM START - MAIN RING

- \*Hack Division
- \*Low Hunter Division
- Adult Amateur Hunter Division
- \*Adult Equitation Over Fences (With Division)
- \*Adult Amateur Equitation On The Flat

### CANADIAN WINTER RING -7:30 AM START

- \*.90 Training Jumper Division
- \*Jumper Medal (1.0 M)
- \*1.0M Jumper Division
- \*1.10M Trillium Jumper Division

**ALL ENTRIES TO:**  
**[www.showmate.net](http://www.showmate.net)**

## IRON HORSE TRILLIUM SHOW

Pricing and Rules (see page )

- Administration Fee: \$25.00
- Scratch Fee: \$40.00
- Stall Fees: \$45.00/day (box)
- Clear Round School \$25.00

**Cheques are made payable to: Iron Horse**

Hunter Classes: 3 O/F & 1 U/S

Jumper Classes: Table A Immed. JO/ Speed/Power & Speed

Stalls must be booked in advance. **No Refunds on Stalls.**

Scratched entries will pay the scratch fee , in full, with the administration fee. If the entry does not scratch with the show office then full entry fees will apply. See specs on pg.9

All entries (including faxed entries) must be received prior to the closing date otherwise post entry fees will apply. Full payment/open cheque required to receive show number(s).

Un-judged Schooling available (see Page 9 for details).

Show schedule is subject to change without notice at management discretion. No dogs please.

**LOCATION OF SHOW:** *Iron Horse Equestrian Complex*  
5244 No. 1 Sideroad,  
Burlington ON, L7M 1T9  
Google:C5GJ+C3 Burlington, Ontario

**OFFICIALS:**

**JUDGES:** Sharon MacBay/Sherri Whitworth-  
Denouden

**COURSE DESIGNER:** Mike Pegg

**STEWARD:** Susan Legge

**INGATE:** Laura White/Lynn Johnson

**SHOW SECRETARY:** Marion Sharp

**TIMER:** Dave Christie

**MEDIC:** Medivent

**ENTRIES CLOSE: AUGUST 12, 2019**

**\*\* HACKING IN THE HUNTER RINGS IS PERMITTED IN THE MORNING - 6:30 AM UNTIL 7:30 AM\*\***





# VANBROOK EQUESTRIAN

*Wishes all the Central West  
Competitors the best in the  
2019 Season!*

*Boarding, Lessons, Sales &  
Showing*







## **2019 Challenge Series Dates**

**May 5 - Iron Horse Performance**

**May 19 - Iron Horse Performance**

**June 2- Parish Ridge Stables**

**June 16 - Parish Ridge Stables**

**July 14 - The Mott's Equestrian Centre**

**Aug 4-Vector Equestrian**

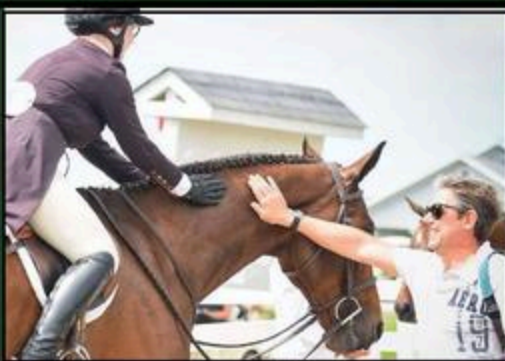
**Sept 15 -Vector Equestrian**

**Sept 29 -FINALE @  
Iron Horse Performance**

**SEE OUR WEBSITE AT  
[WWW.CHALLENGESERIES.CA](http://WWW.CHALLENGESERIES.CA)**



## Photo Contest 2019



# GREENHAWK<sup>®</sup>

## EQUESTRIAN SPORT

PLEASE VISIT US FOR  
**ALL OF YOUR**  
*equestrian &  
pet needs!*

### GREENHAWK AND BARK & FITZ BURLINGTON

2290 Queensway Dr. Burlington, ON

Tel: (905) 333.5858

Mon - Wed & Fri: 9:30am - 6:00pm

Thurs: 9:30am - 8:00pm

Sat: 9:00am - 5:00pm | Sun: 11:00am - 4:00pm

### GREENHAWK CAMBRIDGE

15 Sheldon Dr., Unit #10. Cambridge, ON

Tel: (519) 623.3535

Mon - Wed & Fri: 10:00am - 6:00pm

Thurs: 10:00am - 8:00pm

Sat: 9:00am - 5:00pm | Sun: 11:00am - 4:00pm