



**CENTRAL WEST**  
**TRILLIUM CIRCUIT**  
**SHOW GUIDE**

# Meadowlarke North

## Summer & Winter Show Series

### 2020 Summer Series

#### Show Dates

**Sunday March 29**

Indoor - Jumpers Only

**Sunday April 5**

Indoor - Hunters/Hack Only

**Monday May 18**

Hunters/Jumpers/Beginners

**Sunday June 28**

Hunters/Jumpers/Beginners

**Monday August 3**

Hunters/Jumpers/Beginners

**Monday September 7**

Finale - Hunters/Jumpers/Beginners



### Summer Series

- \* 2 beautiful outdoor Sand Rings
- \* Indoor Ring w/Fiber Footing
- \* Spacious Warm-up Ring w/Fiber Footing
- \* Hunters, Jumpers & Beginners
- \* Professional, Friendly & Fun

### Winter Series

- \* 100' x 240' Indoor Ring
- \* 80' x 144' Warm-up Ring both w/ Fiber Footing
- \* HEATED Waiting Ring & Spectator Area
- \* Hunters & Jumpers
- \* Horse Shows & Arena Rentals

**www.MEADOWLARKESTABLES.com**

info@meadowlarkestables.com

800-295-0419



The Central West Trillium Zone is incorporated as a not for profit organization and is governed by the rules of Equestrian Canada (EC). The bylaws of the Central West Trillium Association govern the conduct of its governing body and all members in the zone.

The [Trillium Hunter Jumper Association](#) has divided the province into seven geographical zones. The main premise behind this decision was that competitors would not have to travel significant distances on a regular basis to be involved in the horse show circuit. They can show relatively locally, and complete their division in one day. This geographic division of the province has served the organization very well in that on any given weekend, there can be as many as seven Trillium Shows on!

The Zone offers hunter, jumper, equitation and hack classes at all of its shows.

The circuit is comprised of ten horse shows that run through a set region within the province of Ontario. Central West has shows from the Niagara Region to up and into the Golden Horseshoe. The series end Championships hosts the best in the province!

Central West has a proud tradition within the Trillium Hunter & Jumper Association which



## CENTRAL WEST TRILLIUM CIRCUIT

started in 1983 and has been growing with one of the biggest memberships of the THJA. The organization was designed with the goal of bridging the gap between local schooling shows, and the “A” Circuit. The Trillium Circuit would provide exhibitors a viable local alternative to pursue their equine competition interests, and would provide a training ground for new judges, course designers and stewards.





Showing, Lessons, Boarding & Training

6686 Gore Road, Puslinch ON  
(647) 567-3174  
[vqequestrian.com](http://vqequestrian.com)





**GRANDVIEW FARMS EQUESTRIAN CENTRE**

**Hunter \* Jumper\*Equitation\*Boarding\*Training**

**A hosting farm of the Heart of Niagara Series**

**570 Hwy 20, Fenwick ON L0S 1C0    Julieanne Marr - 289-668-6345**

**[www.grandviewequestriancentre.com](http://www.grandviewequestriancentre.com)**



# VANBROOK EQUESTRIAN

PROUD SUPPORTERS  
OF THE 2020  
CENTRAL WEST  
TRILLIUM CIRCUIT

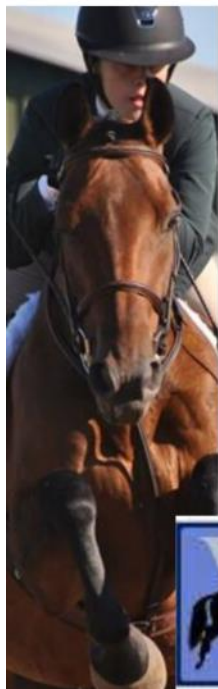
*Good luck to all the  
competitors!*

*Showing \* Boarding  
\*Sales \* Leasing*

*Julie Van Wieren  
Brittany Simmons  
647-323-7714  
11730 Nassagaweya  
Esquesing Townline,  
Acton, Ontario L7J 2L7*



VANBROOK  
EQUESTRIAN





**PREMIUM  
BOARDING  
  
SHOWING  
  
LESSON  
PROGRAMS  
FOR ALL AGES**

For more information  
contact us!

905-331-7176

905-630-3928

[www.parishridgestables.com](http://www.parishridgestables.com)





# 2020 CHALLENGE SERIES



**May 3 & 31 - Iron Horse**

**June 14 & 28 - Parish Ridge**

**July 12 - The Motts Equestrian Center**

**Aug. 16 & Sept. 13 - Vector Equestrian**

**Grand Finale Sept. 27 - Iron Horse**

**Cross Rails - 2'6", Medals in Equitation Divisions**

**Grande Finale with Classics, Coolers and Prize**



**[WWW.CHALLENGESERIES.CA](http://WWW.CHALLENGESERIES.CA)**



# Findaway Equestrian

*Showing \* Boarding \**  
*\* Leasing \* Lessons \* Training*

560 Synder's Road East, Baden ON

[info@findawayequestrian.com](mailto:info@findawayequestrian.com)

519-897-9751



# LENKA EQUESTRIAN CENTRE

COME JOIN THE LENKA EQUESTRIAN BARN  
FAMILY!

OFFERING ENGLISH RIDING LESSONS, SUMMER HORSE  
CAMP

HORSE BREAKING, TRAINING, SALES AND BOARD.  
LOCATED IN CAMPBELLVILLE, ON

[WWW.LENKAEC.COM](http://WWW.LENKAEC.COM)

HERE ARE SOME OF OUR HORSES THAT ARE AVAILABLE FOR PART BOARD FOR  
PLEASURE OR SHOWING







Schooling shows for all  
ages & levels!



## SUGARBUSH SERIES

### DATES

#### FINDAWAY EQUESTRIAN

July 1, 2020

560 Synder's Rd. E., Baden ON  
[www.findawayequestrian.com](http://www.findawayequestrian.com)

#### FINDAWAY EQUESTRIAN

July 8, 2020

560 Synder's Rd. E., Baden ON  
[www.findawayequestrian.com](http://www.findawayequestrian.com)

#### MILLSIDE STABLES

July 22, 2020

675671 16 Line, Bright ON  
[www.millsidestables.com](http://www.millsidestables.com)

#### TERRIAN EQUESTRIAN

July 29, 2020

1474 Karmel Koch Road, St. Agatha ON  
[www.terrinequestrian.com](http://www.terrinequestrian.com)

#### MILLSIDE STABLES

August 12, 2020

675671 16 Line, Bright ON  
[www.millsidestables.com](http://www.millsidestables.com)

#### TERRAIN EQUESTRIAN

August 19, 2020

1474 Karmel Koch Road, St. Agatha ON  
[www.terrinequestrian.com](http://www.terrinequestrian.com)

#### SERIES END AWARDS/POTLUCK

August 21, 2020 - Terrain Equestrian

# 2020 CHARITY SHOW & DINNER



Proceeds to the Arthritis Society  
(To support childhood arthritis research and care)



The winners of 2019:  
Julie McGowan and Windsor

## June 13th 2020

### 1M Open Jumper Class (Table A Regular Jump Off format)

Neck Ribbons for Top 10

Coolers for Top 3

Prizes for all Riders

Choose Your Song

Dinner Tickets available  
[www.vectorcharityshow.com](http://www.vectorcharityshow.com)



**CENTRAL WEST BANQUET COMMITTEE  
PRESENTS**

# **THE ROARING 2020'S BANQUET NIGHT**

**Come in your most  
fabulous flapper & modern 2020's  
fashions!  
NO CORSETS ALLOWED  
TICKETS ON SALE LATER IN THE  
SHOW SEASON!**

October 9, 2020  
Liuna Station, 360 James St N, Hamilton,  
ON L8L 1H5 Hamilton ON

**CONTESTS &  
PRIZES!  
FLAPPER BEST  
COSTUME AWARD**

SEE ALL THE DETAILS ON OUR  
WEBSITE:  
[WWW.CENTRALWESTZONE.COM](http://WWW.CENTRALWESTZONE.COM)





**SHOWING \* BOARDING \* LESSONS**

**JOIN OUR WINNING TEAM!**

WWW.PARISHRIDGESTABLES.COM  
2377 COLLING ROAD, BURLINGTON ON  
CONTACT FOR US MORE DETAILS: 905-331-7176/905-630-3928



**CENTRAL WEST**  
**TRILLIUM CIRCUIT****PRESIDENT'S MESSAGE****CENTRAL WEST TRILLIUM REGION 2020**

If you are new to the Central West Circuit or returning for more great competition we strive to make your experience positive! We welcome your feedback through our Annual Survey & Town Hall Meeting.

PLEASE, take the time to read the information provided in this Guide.

Keep it accessible for reference throughout the season!

To be "in the know" for 2020:

1. For 2020, Central West will present 10 shows.
2. Persons responsible for horses entered in Central West Competitions must be able to provide proof of Vaccinations.

**ARTICLE A519 VACCINATIONS** All horses attending Equestrian Canada sanctioned competitions must have been administered Equine Influenza and Equine Herpes Virus (1&4) vaccinations within 6 months (+21 days grace period) before arrival at the event. No horse shall receive vaccination within 7 days prior to arrival at the event. Horses not in compliance with this rule may be asked to leave event site at the discretion of Competition Management.

# CENTRAL WEST

## TRILLIUM CIRCUIT

Specifications for all 2020 Divisions can be found on the Central West and THJA websites.

**[www.centralwestzone.com](http://www.centralwestzone.com)**

**[www.trilliumhunterjumperassociation.com](http://www.trilliumhunterjumperassociation.com)**

Please email the Central West Board if you have questions, concerns or suggestions.

**[CWTrilliumboard@gmail.com](mailto:CWTrilliumboard@gmail.com)**

Many thanks to Yvonne Busby for her work on the 2020 Show Guide and administrative support to the zone throughout the year!

**WISHING EVERYONE GREAT STRIDES FORWARD THIS SHOW SEASON!**

*Missy Todd*, Central West President



## LEANNE GUINN

Sales Representative

C: 416-460-1687

O: 905-338-3737

[leanne@royallepage.ca](mailto:leanne@royallepage.ca)

[www.leanneguinn.ca](http://www.leanneguinn.ca)

*#WinWithGuinn*

**ROYAL LEPAGE**

Royal LePage Real Estate  
Services Ltd., Brokerage





## Table of Contents

### Contents

What You Need To Know	19
Official Program, Rules, and Claims	23
Division Specifications	25
Pricing and Rules	35
Show Dates	36
Show Schedules	37

## Dates to Remember

Trillium Championships—  
September 2-6, 2020  
Caledon Equestrian Park

Central West Awards Banquet  
October 24, 2020Liuna Station,  
Hamilton ON

Central West Annual Townhall-  
Meeting—TBA

Central West Annual General  
Meeting—March 16th, 2020

---

## What You Need to Know

---

Anyone mounted on a horse or pony must wear an ASTM/SEI or BS EN approved helmet with the safety harness correctly fastened at all times while on the competition grounds.

Competitors must compete in a minimum of **five shows** during the season in the same division (s) to qualify for the Trillium Championships and year-end awards.

Hunter—Second accumulative refusal, run out or bolting while on course results in elimination.

Ponies 8 years and over that have been officially measured at an Equestrian Canada sanctioned event will be issued an official measurement card. All ponies will be subject to random measurements regardless of whether or not the pony has a permanent measurement card. For further information see EC Rule General Regulations, Article 1104.



**Jumper Medal**— All tack remains the same for jumping and flat phases.

**1.0M Jumper Division**— This division combines the Child/Adult Jumpers & Open Divisions. Open to all horses and ponies. Maximum height of fences 1 Meter—run under Table A.

**Trillium Jumper (1.10 M)** - This division is open to all jumper competitors however the horses are limited to two jumper divisions plus the Jumper Medal and any other miscellaneous classes.

**Drug Testing**— Any horse/pony entered in any class at a competition may be selected for equine medication testing while at the event location.

**Posted Order of Go**— A posted order of go will be available a minimum of 30 minutes before the start of a class. If there is a conflict the horse/rider combination has 5 single trips in a ring to make the posted order of go. One ring may be made a priority ring due to showing numbers.





# CENTRAL WEST

## TRILLIUM CIRCUIT

**Unjudged Schooling Round**— Some shows will be offering competitors an un-judged hunter schooling round. The round will be open to all riders, including professionals. Full dress is required. The set course will be jumped only once (2 refusals constitute elimination). Each horse/pony is limited to one unjudged schooling round per ring, per day. Equitation riders, who are not competing in other divisions, may school over the set schooling course for the respective height.

**Scratched Entries**— Scratched entries will pay the scratch fee, in full, with the administration fee. ***If the entry does not scratch with the show office then full entry fees will apply.*** Hunter classes— once the division has started over fences-class fees will not be refunded. Jumper/Equitation/Medal classes— once a class has started the class fee will not be refunded.

**Unpaid Show Accounts**— Unpaid show accounts will be reported to the Zone committee and competitor/owner will be considered “not in good standing.” This will affect the future status of the competitor / owner on the THJA circuit.

### IT IS YOUR RESPONSIBILITY TO KNOW THE RULES!

**Memberships required:**

***Trillium Hunter/Jumper Association***

[www.thja.ca](http://www.thja.ca)—the 2020 membership can be obtained on their website.

Please note THJA membership is required if you are accumulating points for the year-end Zone awards/Championships

***Equestrian Canada***

[www.equestrian.ca](http://www.equestrian.ca)—login and registration required on website

***Ontario Equestrian***

[www.horse.on.ca](http://www.horse.on.ca)— Silver membership—login required

## Equestrian Canada Rule Changes

All horse entered in any class at a competition must have met the requirements of Article A519, Vaccinations. See Rules of Equestrian Canada, Section A, General Regulations, Article A519, Vaccinations.”

G116-Jumper and Jumper Equitation competition arenas, and all Hunter, Jumper and Equitation warm up arenas: FEI approved keyhole breakaway systems (metal or plastic) are mandatory on the back rails of oxers, middle and back rails of triple bars, and rails over water. 2. Hunter and Hunter Equitation competition arenas: for 2020 only, plastic cups and plastic pins are acceptable. FEI approved keyhole breakaway systems (metal or plastic) are also acceptable in 2020 and will be mandatory in 2021.

G103—In the case of a fall of a horse or pony, Article A517.4 will apply. The officiating steward, judge, technical delegate, president of the ground jury or appointed competition veterinarian has the authority to remove a horse from the event for a period of up to 24 hours, if in their reasonable opinion the horse is unfit to compete, or where, in their reasonable opinion, there is a safety concern regarding the horse. The official's decision is final and cannot be appealed. 3. In the case of a fall of an Athlete anywhere within the grounds of the event during the hours of competition operation, the Athlete must be cleared by the Competition's medical service, before the Athlete may continue to compete in the next round or Competition. The competitor is solely responsible for ensuring the onsite medical assessment takes place. This rule is applicable to all competitors (including foreign) at EC sanctioned events and applies to falls/accidents that occur at the event location.

## **Official Program, Rules, and Claims**

The Trillium shows listed in this program are recognized provincial circuit competitions of Equestrian Canada ("EC") and its rules and regulations.

### **Equestrian Canada Statement of Principles**

Upholding the welfare of all horses , regardless of value, as a primary consideration in all activities requiring that horses be treated with kindness, respect and compassion, and that they never be subjected to mistreatment, ensuring that owners , trainers, and exhibitors, or their agents , use responsible care in the handling, treatment and transportation of their own horses as well as the horses placed in their care for any purpose; providing for the continuous well-being of horses by encouraging routine inspection and consultation with health care professionals and competition officials to achieve the highest possible standards of nutrition, health, comfort and safety as a matter of standard operating procedure; providing current information on Code of Practice for the Care of Handling of Equines and other equine health and wealth initiatives continuing to support scientific studies on equine health and welfare; requiring owners, trainers and exhibitors to know and follow their sanctioning organization's rules and to work within the industry regulations in all equestrian competition; and reviewing, revising and developing competition rules and regulations that protect the welfare of the horse.



### **Equestrian Canada Rule Amendment**

Per Article A801, every entry at an EC-sanctioned competition shall constitute an agreement by the person responsible that the owner, leasee, trainer, manager, agent, coach, driver or rider and horse shall be subject to the EC constitution and all the rules of EC and any additional rules set by the competition. It is the responsibility of all individuals participating in any capacity in EC-sanctioned competitions to be knowledgeable regarding the EC constitution and the applicable rules of EC and the additional rules, if any, posed by the competition. Do not participate in this EC-sanctioned competition in any capacity if you do not consent to be bound by the constitution and rules of EC and any additional rules imposed by the competition.

### **Membership and Horse Recording Requirements**

Equestrian Canada (EC) has stringent rules and regulations regarding membership and Horse Recording requirements. In light of this, competitors and horse owners will be required to provide proof of their EC, Ontario Equestrian (OE), and Trillium Hunter Jumper Association (THJA) membership cards and proof of payment of updated sport licenses at each show office.

Temporary Sport Licenses and/or Temporary Horse Recording will be required to be purchased at each show if proof of membership is unavailable (actual cards & receipts). **No points will be accumulated on a temporary license.**

## **Division Specifications**

### **Limitations**

Horses are limited to 2 hunter divisions, the hack division, and the appropriate equitation or medal classes.

Horses are limited to 2 jumper divisions, the hack division, and the appropriate equitation or medal classes.

Horses may compete in 1 hunter division, 1 jumper division, and the hack division and their appropriate equitation and medal classes.

Miscellaneous classes are not included in these limitations. Be sure to check the horseshow prize list for those limitations.

### **Equitation**

Equitation is judged on the rider ability. The rider competes either over fences or on the flat and they are judged on both their position and their correct use of aids to produce an accurate ride. Conservative, traditional attire is required. Gloves are expected. Black or brown smooth leather half chaps are permissible providing they match the boot colour. See EC Rule—Article G1003

#### **Guide for Junior Ages** (In the EC Rule Book, the guide for junior ages are):

Junior “A” – a rider who is 15, 16, 17 on January 1<sup>st</sup>

Junior “B” – a rider who is 12, 13, 14 on January 1<sup>st</sup>

Junior “C” – a rider who is under 12 on January 1<sup>st</sup>

Junior “A” Riders may not ride “B” or “C” ponies

Junior “B” Riders may ride “A”, “B”, or “C” ponies

Junior “C” Riders may ride “A”, “B”, or “C” ponies

For show purposes, ponies are to be divided as follows:

“A” ponies—over 13.2 hands, but not to exceed 14.2 hands

“B” ponies—over 12.2 hands, but not to exceed 13.2 hands

“C” ponies—do not exceed 12.2 hands

Trillium “A” Equitation over fences—Open to Large Pony division riders with fences at 2'9", Children's Hunter riders with fences 3', and Trillium Hunter High/Low division riders with fences at 3'3".

Adult Equitation—Adult Equitation riders must be amateurs.

A horse or pony that is ridden in an Equitation Over Fences class or in a Jumper Medal class may only be ridden in that class by one rider. In the event that a rider competes in two different divisions requiring them to jump different heights, it will be their choice which height they will jump for the equitation over fences class.

### **Championships**

Horses and riders are required for formal presentations at the Championship show.





# CENTRAL WEST

## TRILLIUM CIRCUIT

### **Trillium Hunter Medals**

Originally created in the image of the Jump Canada Medal, the Trillium Medal Class has evolved into a specialty class unique to the Trillium Circuit. Where a contradiction exists, these specifications supersede those of EC Jump Canada Medal. These classes are open to Junior and Amateur riders only. Riders may walk the course. Eligibility as per individual hunter division specs for that particular medal.

*First Phase*—over fences. Figure 8 course of no less than 8 jumps. The class is judged in accordance to Article G1008 Class Routine Over Fences. No additional tests over fences are permitted.

*Second Phase*—On the Flat. All contestants, or a minimum of 10, shall be called back to perform at a walk, trot and canter. From a maximum of 4 competitors, the judge may call for a minimum of 2 or more requirements from Article G1009 Tests (EC Rule Book Section G).

*Scoring:* Medal classes will be judged 60% over fences and 40% on the flat.

*Tack & Equipment:* All tack and equipment remains the same for both phases. Restrictions are per Article G1003 through G1005—EC Rule Book—Section G.

*Medal Heights:*

My First Medal—Short Stirrup—fences 21”

Modified Children’s Medal—fences 2’9”

Modified Adult Amateur Medal—fences 2’9”

Children’s Hunter Medal—fences 3’

## **Hunter Divisions**

A hunter is judged on performance, style of jumping and movement. Judges are looking for the athletic ability of the animal both over fences and under saddle.

### **Short Stirrup Division**

Fences not to exceed 21"

Open to "C" riders. Fences will not exceed 21 inches and the course will be comprised of a maximum of eight fences. Course to consist of verticals only, no oxers. Short Stirrup riders may not enter any other classes except for "C" Equitation on the Flat. Open to both horse and ponies, but lines (distances) will not be adjusted. Ideally, horse and rider combinations are able to ride all lines with the same consistency in rhythm and pace. In the event that a Short Stirrup rider has 2 mounts, the second mount must be jogged and flatted by another rider who is eligible for the Short Stirrup division. Attire as per EC Article G109.

### **Small Pony Hunter Division**

Fences 2'3"

Open to ponies not exceeding 12.2 hands. Small pony riders must be Junior B or Junior C riders. (see Equitation rules) Judges look for a rider who is suitably mounted.

### **Medium Pony Hunter Division**

Fences 2'6'

Open to ponies exceeding 12.2 hands, but not exceeding 13.2 hh. Medium pony riders must be Junior B or Junior C (see Equitation rules). Judges look for a rider to be suitably mounted.  
rider

# CENTRAL WEST

## TRILLIUM CIRCUIT

### **Large Pony Hunter Division**

Fences 2'9"

Open to ponies exceeding 13.2h and not exceeding 14.2hh. Large pony riders can be ridden by any Junior A, B or C riders. (see Equitation Rules). Judges look for a rider who is suitably mounted.

### **2'6" Children's Division**

Fences 2'6"

Open to Juniors riding horses. Riders are not eligible to compete in any division with a height over 2'6", except for the Hi/Low Development Hunter Division. Horse/rider combinations are permitted to show the Hack division and age appropriate equitation on the flat. (Can be run combined with the 2'6" Amateur division throughout the season, but will be separate at the Championships).

### **2'6" Amateur Division**

Fences 2'6"

Open to adult amateurs riding horses. Riders are not eligible to compete in any division with a height over 2'6", except for the Hi/Low Development Hunter Division. Horse/rider combinations are permitted to show the Hack division and age appropriate equitation on the flat. (Can be run combined with the 2'6" Children's division throughout the season, but will be separate at the Championships).

### **Modified Adult Hunter Division**

Fences 2'9"

Open to juniors riding horses. A horse/rider combination may only cross enter into the Hack Division, the Low/High Hunter Development Division, the Modified Children's Medal, and their age appropriate



equitation on the flat. The rider may enter any other division or class at that show on another horse or pony. The horse may be shown in another class/division with another rider. This division may be combined with the Modified Adult Division throughout the season, but will be split at the Championship Show.

### **Modified Adult Amateur Hunter Division**

Fences 2'9"

Riders in this division must hold a current amateur card. A horse/rider combination may only cross enter into the Hack Division, the Low/High Hunter Development Division, the Modified Children's Medal, and their age appropriate equitation on the flat. The rider may enter any other division or class at that show on another horse or pony. The horse may be shown in another class/division with another rider. This division may be combined with the Modified Children's Division throughout the season, but will be split at the Championship Show.

### **Children's Hunter Division**

Fences 3'

Open to horses ridden by a junior. As per EC Rules—Article 307.

### **Low Hunter Division**

Fences 3'

Open to all horses.

### **Adult Amateur Hunter Division**

Fences 3'

All adults competing in amateur classes at EC sanctioned competitions must possess a current amateur card, which is purchased annually. Adult Amateur riders may enter the Trillium Hunter Division at the 3'3" low option height.

# CENTRAL WEST

## TRILLIUM CIRCUIT

### **Trillium Hunter—Low/High**

Fences 3'3" and 3'6"

The low option of this division is open to all riders. The high option is not open to Children's or Adult Amateur division riders.

### **Hack Division**

Horses showing in the Hack Division may be of any breed or combination of breeds. Ponies are not permitted in this division. The Division shall consist of Road, Show and Pleasure hack. Additional requirements of the Road Hack will be the demonstration of a strong trot. Additional requirements for the Show Hack class will be collected and extended gaits. Both Road & Show classes may be required to Hand Gallop (never more than 8 horses at a time). Pleasure Hack will never be required to Hand Gallop. Martingales, breastplates, boots and/or any kind of bandages are not permitted. Drop and flash nose bands are prohibited. Brow bands shall be leather or any description but not solid white, coloured or sequined. Whips are not permitted in any hack class. In the event of a tie, horses will be shown in hand and judged on conformation.

### **Modified Pony Hunter Division**

Open to all ponies. Ponies will jump 3" below their regular pony hunter division height and distances will be adjusted according to pony size as per EC Rules –G306.6A. Age restrictions as per EC Rules G306.1. Pony/rider combinations may not cross enter into any other classes or divisions requiring them to jump.

Small—not to exceed 2'

Medium—not to exceed 2'3"

Large—not to exceed 2'6"

## **Jumper Divisions**

Horses are to be judged only on performance over a pre-designated course. The competition management must ensure that a plan giving precise detail of the course is posted at least 30 minutes before the start of the competition. Jumper tack as per EC Rules.

### **0.90m Training Jumper Division**

Open to all horses & ponies. Maximum height of fences –.90m. Run under Table A & FEI Article 238.2.2.2.

### **1.0m Jumper Division**

Open to all horses and ponies. Maximum height 1metre. Run under Table A & FEI Article 238.2.2.2.

### **1.10m Trillium Jumper Division**

Standing martingales and draw reins are not allowed for any competitor in this division. Juniors and Amateurs can cross enter into this division.



# CENTRAL WEST

## TRILLIUM CIRCUIT

### **Trillium Jumper Medal Class**

Fences not to exceed 1.0M

Originally created on the image of the CET Medal, the Trillium Jumper Medal has evolved into a specialty class unique to the Trillium Circuit. These specifications supersede those of the Equestrian Canada CET medal. The class will have both a jumping phase and a flat phase. This class is open to Junior and Amateur riders only. It is judged as an equitation class in two phases with the jumping to be the first phase.

*Tack & Equipment:* All tack and equipment remains the same for both phases. Only running martingales used in a conventional manner are permitted. No standing martingales, draw reins or restricted running martingales are permitted. Conservative coloured headgear (as per Article G1009) with no additional adornment. Stirrups are restricted as per EC Article G1109.

*Judging:* Jumping phase to be conducted under current EC jumper rules. In addition, the class will be judged on seat, hand, guidance and control. Jumper Medal to be judged 60% over fences & 40% flat phase.

*Jumping Phase:* Jumping Phase should be over a course of at least 9 fences. Fences will not exceed 3'3" in height with spread not to exceed the height. The course must contain at least one double or triple combination with at least one spread fence. Other spread fences are required elsewhere on course. A liverpool is optional.



*Flat Phase:* All riders or a maximum of 12 who complete the Jumping Phase shall be called back to perform on the flat. During the flat phase, riders will show a working walk, the working sitting trot, the working

rising trot, and showing a lengthening of stride, the working canter and the working canter showing a lengthening of stride. . The working canter on the counter lead must be demonstrated for a least one full

revolution of the ring in each direction. The top 4 riders in the flat phase may be asked to complete a short test determined by the judge. When this test is being ridden, the riders will turn their backs so they cannot watch the other competitors.



# CENTRAL WEST

## TRILLIUM CIRCUIT

### Pricing & Rules

The following fees apply to most 2020 Central West Trillium Shows. Stall fees, fees for non-core classes, and other miscellaneous fees may differ between shows. Please see the show schedules for additional fees. HST is not included and will be added where applicable.

#### **Entry Fees (HST not included):**

Hunter & Hack classes:	\$25.00/class
Jumpers:	\$25.00/class
Equitation/Medal:	\$25.00/class
Unjudged Schooling:	\$20.00
Post Entry Fee:	\$40.00
Administration Fee:	\$25.00
OEF Drug Fee:	\$7.00
Trillium Fund Fee:	\$6.00
Scratch Fee:	\$40.00

Note: Hunter divisions may consist of 3 trips over fences & a flat—indoor shows have the option to go to 2 –3 O/F-1 flat.

#### **Prize List—Rating T1**

Ribbon Placing as per show management

Prize Money (unless otherwise noted)

\$35, \$30, \$28, \$25, \$25 (O/F)

\$30, \$28, \$25, \$22, \$22 (U/S)

All competitions contained herein are sanctioned as Silver competition members of Equestrian Canada, 308 Leggat Drive, Ottawa ON K2K 1Y6 and are governed by the rules of EC.

Every class offered herein is covered by the rules and specifications and will be judged in accordance with the EC rule book.

## 2020 SHOW DATES

JD Leap Into Spring A	April 3-5, 2020
JD Leap Into Spring B	April 11, 2020
Meadowlarke North A	April 17-19, 2020
Meadowlarke North B	April 24-26, 2020
Fox Run Trillium Show	May 8-10, 2020
Hamilton Hunt Trillium Show	May 22-24, 2020
Waymark Farms Trillium Show	June 5-7, 2020
Twinholm Trillium Show	June 19-21, 2020
Camberwell Trillium Show	July 3-5, 2020
Parish Ridge Trillium Show	July 24-26, 2020
Vanbrook Trillium Show	August 7-9, 2020
Iron Horse Trillium Show	August 21-23, 2020

# CENTRAL WEST

## TRILLIUM CIRCUIT

### JD LEAP INTO SPRING A& B

At Iron Horse Equestrian Complex, Burlington, ON  
April 3-5 (Hunters) • April 11 (Jumpers)

#### Friday April 3– 7:00 AM Start

- Short Stirrup Division
- My First Medal (*Open to Short Stirrup riders only - to be run with division*)
- Modified Pony Division (L-M-S)
- Small Pony Hunter Division
- C Equitation Over Fences
- C Equitation O/F—Flat (*O/F to be run with division*)
- Medium Pony Hunter Division
- B Equitation Over Fences (*O/F to be run with division*)
- B Equitation Flat
- Large Pony Hunter Division
- Logan's Leadline (*10 & under*)

#### Saturday April 4—7:00 AM Start

- 2'6 "Children's Hunter Division
- 2'6" Amateur Hunter Division
- 2'6"/2'9" Low/High Development Hunter Division
- Modified Children's Hunter Division
- Modified Children's Hunter Medal (*run with Division*)
- Modified Adult Hunter Division
- Modified Adult Hunter Medal (*O/F to be run with division*)

#### Sunday April 5—7:00 AM Start

- Low Hunter Division
- A Equitation Flat
- Children's Hunter Division
- A Equitation Over Fences (*to be run with Children's division*)
- Children's Medal (*to be run with Children's Division*)
- Adult Amateur Hunter Division
- Adult Amateur Equitation Over Fences (*O/F to be run with division*)
- Adult Amateur Equitation Flat
- Hi/Low Trillium Hunter Division

#### Saturday April 11 - 7:00 AM Start

- Hack Division (Road/Show/Pleasure)
- .90 M Clear Round Jumper Schooling
- .90 M Jumper Division (.90M)
- 1 M Clear Round Jumper Schooling
- 1 M Jumper Division (1 M)
- Jumper Medal (1M)
- 1.10 M Trillium Jumper Division (1.10 M)

Hacking is permitted, on hunter days, prior to the start of the show –6:30 am-7:00 am



**Closing Date: Monday March 30**

**Entries to:** JD Leap Into Spring

**Attn:** Dorothy Lockerbie

**Email:** lockerbied@gmail.com

**Phone:** 905-379-6451

**Online Entries:**

www.showmate.net

**Apr 3-5 Judge:** TBA

**Apr 11 Judge:** Peter Stoeckl

**Stewards:** 1st & 2nd—

Michael Schram

**Course Designer:**

Jeremy Denouden

**Timer:** David Christie

**Show Manager:**

Dorothy Lockerbie

**Pricing and Rules  
(HST not included)**

Administration Fee:	\$25.00
Scratch Fee:	\$40.00
Clear Round Schooling:	\$25.00
Stall Fees:	\$50.00/day
Post Entry Fee:	\$40.00
Class Fee:	\$25.00

Cheques are made payable to:  
JD Show Management

Scratch and Administration Fees will be applied to all Scratched Entries .  
*Full entry charges will be applied if the show office is not contacted regarding the scratched entrie(s).*

All entries must be received prior to the closing date otherwise post entry

fees will apply. **Full payment/open cheque required to receive show number(s).**

**Hunter Classes:** 2 O/F & 1 U/S

**Jumper Classes:** 3 O/F per Division

*Stalls must be booked in advance. No Refunds on Stalls. **Bedding is NOT included in the stall cost.***

**Un-judged Schooling available**  
(see Page 15 for details).

Show schedule is subject to change without notice at management discretion. **No dogs please.**

**\*\* Hacking is permitted in the hunter rings prior to show 6:30 am-7 am\*\***

**Hosted at Iron Horse Equestrian Complex**

5244 No. 1 Sideroad,  
Burlington ON, L7M 1T9

Telephone: (905) 379-6451

Google Map: C5GJ+C3 Burlington, Ontario

**CENTRAL WEST**  
TRILLIUM CIRCUIT

**MEADOWLARKE NORTH TRILLIUM SHOW**

**At Meadowlarke North, Acton, ON**  
**April 17– 19 (Hunters) • April 24– 26 (Jumpers/Hunters)**

**Friday April 17– 7:30 AM Start**

- 2'6 "Children's Hunter Division
- Modified Children's Hunter Division
- Modified Children's Medal *(w/division)*

**Saturday April 18– 7:30 AM Start**

- Short Stirrup Division
- My First Medal
- Modified Pony Division (L-M-S)
- C Equitation Flat
- Small Pony Division
- C Equitation Over Fences *(O/F to be run with division)*

**Sunday April 19– 7:30 AM Start**

- Medium Pony Division
- Large Pony Division
- B Equitation Flat *(O/F to be run with division)*
- A Equitation Flat *(A Equitation O/F to be run with division)*
- Children's Hunter Division
- Children's Medal

**Friday April 24 – 7:30 AM Start**

- 2'6"/2'9" Low/High Development Hunters
- Modified Adult Hunter Division
- Modified Adult Medal *(w/division)*
- Hi/Lo Trillium Hunter Division

**Saturday April 25– 7:30 AM Start**

- Hack Division (Road/Show/Pleasure)
- Low Hunter Division
- Adult Amateur Hunter Division
- Adult Amateur Equitation Flat *(O/F to be run with division)*
- 2'6" Amateur Hunter Division

**Sunday April 26– 7:30 AM Start**

- Clear Round Jumper (to be run with first class of .90 M jumpers)
- 0.9 m Jumper Division
- 1.0 M Jumper Division
- Jumper Medal (1.0 m)
- 1.10m Trillium Jumper Division

**Closing Date: April 13, 2020**

**Show Manager:** Stacey French

**Phone:** 905-821-0419

**Email:**

Stacey@meadowlarkestables.com

**Online Entries:**

www.showmate.net

**Apr 17-19 Judge:** TBA

**Apr 24-26 Judge:** Susan Legge

**Steward:** Caroline Hawson

**Course Designer:** Jessica Hunter

**Timer:** David Christie

**Show Secretary:** Anthea Larke

**Ingate:** Stacey French

**Medic:** Medievent

**Pricing and Rules (see page 22)**

Administration Fee: \$25.00

Scratch Fee: \$40.00

Clear Round Jumpers \$20.00

Stalls: \$40.00

***Email to book stalls—email noted above!***

Cheques are made payable to:  
Meadowlarke Stables Inc.

**Hunter Classes:** 3 O/F & 1 U/S

**Jumper Classes:** 3 O/F per Division

*Stalls must be booked in advance.*

*No Refunds on Stalls. Email only to book stalls*

Scratch and Administration Fees will be applied to all Scratched Entries.

Those who do not contact the show office of their scratch will pay *Full entry charges if this is not done.*

All entries must be received prior to the closing date otherwise post entry fees will apply. **Full payment/open cheque required to receive show number(s).**

**Un-judged Schooling available**  
(see Page 15 for details).

Show schedule is subject to change without notice at management discretion. **No dogs please.**

**Hacking is permitted during hunter days from 6:45-7:15 am**

**Hosted at Meadowlarke North**

5154 3rd Line, Acton ON L7J 2L8

(905)821-0419

Google Map: MWJ5+3P Acton, Ontario

**CENTRAL WEST**  
TRILLIUM CIRCUIT

**FOX RUN STABLES TRILLIUM SHOW**

**May 8-10, 2020**

**Friday May 8– 7:30 AM start**

***Ring 1***

- Short Stirrup Division
- My First Medal
- 2'6" Children's Division
- 2'6" Amateur Division

***Ring 2***

- 2'6"/2'9" Low/High Development Hunter Division
- Modified Children's Hunter Division
- Modified Children's Medal
- Low Hunter Division
- Hi/Lo Trillium Hunter Division

**Saturday May 9 - 7:30 AM start**

***Ring 1***

- Small Pony Hunter Division
- C Equitation  
(*O/F to be run with division*)
- Medium Pony Hunter Division
- B Equitation  
(*O/F to be run with division*)
- C/B Equitation on the Flat
- Modified Pony Division

***Ring 2***

- Children's Hunter Division
- A Equitation Flat
- A Equitation Over Fences
- Children's Medal
- Large Pony Division

**Sunday May 10**

***Ring 1 - 7:30 AM start***

- Hack Division (Road/Show/Pleasure)
- Modified Adult Hunter Division
- Modified Adult Medal
- Adult Amateur Hunter Division
- Adult Amateur Equitation O/F
- Adult Amateur Equitation Flat

***Ring 2 - 7:30 AM start***

- .90 M Jumper (0.90 m)
- 1M Jumper (1.0 m)
- Jumper Medal (1.0 m)
- 1.10 M Trillium Jumper (1.10m)

**\*\*Hacking is permitted in the hunter rings from 6:30 am-7:15 am\*\***

Please check Showmate for possible changes to the schedule!



**Closing Date: May 4, 2020**

**Entries to:** 840 Valens Road,  
RR#1 Troy, ON L0R 2B0

**Attn:** Jennifer Werner-Fox Run  
Horse Shows

**Phone:** 905-628-3020

**Fax:** 905-628-4466

**Email:** fox.run@xplornet.com

**Online Entries:**

www.showmate.net

**Judges:** Jen De Neef & Jodie  
Bowen

**Steward:** Susan Evans

**Course Designer:**

Mike Giovinazzo

**Timer:** David Christie

**Ingates:** Brianne Service

& Stacey French

**Show Secretary:** Jennifer Werner

**Show Manager:** Dieter Werner

**Pricing and Rules (see page 22)**

Administration Fee: \$25.00

Scratch Fee: \$40.00

Cheques are made payable to:

Fox Run Horse Shows

**Hunter Classes:** 3 O/F & 1 U/S

**Jumper Classes:** Table A Immed.

JO/ Speed/Power & Speed

Ribbons to 8th place

***NO STALLS AVAILABLE.***

Scratch and Administration Fees will  
be applied to all Scratched Entries.

*Full entry charges will be applied if*

*the show office is not notified.*

All entries (including faxed entries)  
must be received prior to the closing  
date otherwise post entry fees will  
apply. **Full payment/open cheque  
required to receive show number  
(s).**

**Un-judged Schooling available**

(see Page 15 for details).

Show schedule is subject to change  
without notice at management discre-  
tion. **Dogs on leashes please.**

**Fox Run Stables**

840 Valens Road, RR#1

Troy ON, L0R 2B0

Telephone: 905-628-3020 Google map: 8V5V+X4

**CENTRAL WEST**  
TRILLIUM CIRCUIT

**HAMILTON HUNT TRILLIUM SHOW**

**May 22-24, 2020**

**Friday May 22 -**

**Christensen Ring -**

**7:30 AM Start**

- 2'6"/2'9" Low/High Development Hunter Division
- 2'6" Children's Hunter Division
- Trillium Hi/Low Hunter Division

**Bermingham Ring -**

**7:30 AM start**

- Modified Children's Hunter Division
- Modified Children's Medal  
(O/F to be run as 4th trip w/division)
- Modified Adult Hunter Division
- Modified Adult Medal  
(O/F to be run as 4th trip w/division)

**Saturday May 23**

**Bermingham Ring —**

**7:30 AM start**

- Modified Pony Division (L/M/S)
- Small Pony Division
- C Equitation O/F
- C Equitation on the Flat
- B Equitation on the Flat
- B Equitation O/F (w/divisions)
- Medium Pony Hunter Division
- C/B Eq O/F – Large Pony
- Large Pony Hunter Division

• C/ B Eq O/F horse height  
**Christensen Ring - 8 AM start**

- Short Stirrup Division
- My First Medal
- A Equitation on the Flat
- A Equitation O/F (Medium/Large/Children's to run w/division)
- Children's Hunter Division
- Children's Medal

**Sunday May 24**

**Bermingham Ring -**

**7:30 AM start**

- Low Hunter Division
- Adult Amateur Division
- Adult Equitation over Fences  
(O/F to be run as 4th trip w/division)
- Adult Equitation on the flat
- 2'6" Amateur Hunter Division

**Christensen Ring - 7:30 AM Start**

- Hack Division
- Clear Round (0.90 m)
- .90 M Jumper (0.90 m)
- 1M Jumper (1.0 m)
- Jumper Medal (1.0 m)
- 1.10 M Trillium Jumper (1.10 m)

**\*\*Hacking is permitted in the hunter rings**

**Closing Date: May 18, 2020**

**Entries to:**

Hamilton Hunt  
7 Brant County Road 22,  
Caledonia ON

**Phone:** 905-869-3099

**Email:**

Chelsey.overell.hh1@gmail.com

**Online Entries:**

www.showmate.net

**Website:**

www.thehamiltonhuntclub.ca

**Judges:** Susan Legge/ Gay-Ellen  
Dennis

**Steward:** Susan Fish

**Course Designer:**

Mike Giovinazzo

**Timer:** David Christie

**Show Manager:** Chelsey Overell

**Show Secretary:**

Christine Christensen

**Ingates:** TBA

### **Pricing and Rules (see page 22)**

Administration Fee:	\$25.00
Scratch Fee:	\$40.00
Clear Round jumpers	\$25.00
Stall Fees:	\$50.00/day

Cheques are made payable to:  
The Hamilton Hunt Club

**Hunter Classes:** 3 O/F & 1 U/S

**Jumper Classes:** Table A Immed.  
JO/ Speed/Power & Speed

***Stalls must be booked in advance.  
Please call –limited number and  
bedding is NOT included-please  
bring your own. No Refunds on  
Stalls.***

Scratch and Administration Fees will  
be applied to all Scratched Entries.

*Full entry charges will be applied if the  
show office is not notified of the  
scratch.*

All entries (including faxed entries)  
must be received prior to the closing  
date otherwise post entry fees will  
apply. **Full payment/open cheque  
required to receive show number  
(s).**

**Un-judged Schooling available**  
(see Page 15 for details).

Show schedule is subject to change  
without notice at management discre-  
tion. **Dogs must be leashed as we  
have our own hounds.**

### **Hamilton Hunt Club**

Brant, 7 County Rd 22, Caledonia, ON N3W 2G9

Telephone: 905-869-3099 Google Map: 3XW9+V8 Caledonia, Haldimand, ON

**CENTRAL WEST**  
TRILLIUM CIRCUIT

**WAYMARK FARMS TRILLIUM SHOW**

**June 5-7, 2020**

**Friday June 5- 8 AM start**

***Ring 1***

- Modified Children's Hunters
- Modified Children's Medal
- Modified Adult Hunters
- Modified Adult Medal

***Ring 2***

- .90 M Jumper (0.90 m)
- Jumper Medal (1.0 m)
- 1M Jumper (1.0 m)
- 1.10 M Trillium Jumpers (1.10 m)

**Saturday June 6 - 8 AM start**

***Ring 1***

- Short Stirrup
- My First Medal
- Small Pony Hunter Division
- C Equitation Over Fences  
(O/F C/B to be run with division)
- C Equitation on the Flat
- B Equitation on the Flat
- B Equitation Over Fences
- Medium Pony Hunter Division
- Modified Pony Division

***Ring 2***

- Large Pony Hunter Division
- A Equitation on the Flat
- A Equitation Over Fences  
(O/F to be run with division)
- Children's Hunter Division
- Children's Medal
- Hi/Lo Trillium Hunter Division

**Sunday June 7- 8 AM start**

***Ring 1***

- 2'6" Children's Hunters
- 2'6" Amateur Hunters

***Ring 2***

- Hack Division (Road/Show/  
Pleasure)
- 2'6"/2'9" Low/High Development  
Hunter Division
- Low Hunter Division
- Adult Amateur Hunter Division
- Adult Equitation O/F  
(to be run with division)
- Adult Equitation on the Flat

***\*\*Hacking is permitted in the hunter  
rings only from 7:00 am-7:45 am  
weather permitting\*\****



**Closing Date:** June 1, 2020  
**Entries to:** showmate.net  
**Phone:** contact before show-  
 519-580-5119  
**During show:**  
**Barn:** 519-632-7355  
**Cell:** 519-572-2996  
**Online Entries:**  
 www.showmate.net

**Judges:** TBA

**Steward:** Jane Holbrook  
**Course Designer:**  
 Mike Giovinazzo

**Timer:** David Christie  
**Show Manager:** Missy Todd  
**Show Secretary:** Suzan Payne  
**Medic:** Medivent

### **Pricing and Rules (see page 22)**

Administration Fee: \$25.00  
 Scratch Fee: \$40.00  
 Stall Fees: \$40.00/day

Cheques are made payable to:  
Waymark Farms

*Stalls must be booked in advance. No  
 Refunds on Stalls.*

**Hunter Classes:** 3 O/F & 1 U/S

**Jumper Classes:** Table A Immed.  
 JO/ Speed/Power & Speed

Scratch and Administration Fees will  
 be applied to all Scratched Entries.  
*Full entry charges will be applied if*

*the show office is not notified of the  
 scratch.*

All entries must be received prior to  
 the closing date otherwise post entry  
 fees will apply. **Full payment/open  
 cheque required to receive show  
 number(s).**

**Un-judged Schooling available**  
 (see Page 15 for details).

Show schedule is subject to change  
 without notice at management discre-  
 tion. **No dogs please.**

### **Waymark Farms**

867733 Township Road 10, R.R. #3, Bright ON  
 Office: 519-580-5119  
 Barn: 519-632-7355  
 Google Map: 7GP5+HG, Blandford, Ontario

**CENTRAL WEST**  
TRILLIUM CIRCUIT

**TWINHOLM TRILLIUM SHOW**

**June 19– 21, 2020**

**Thursday June 18—Schooling**

**1-4 pm**

- OPEN WARM UP  
( both rings, \$25 per ring )

**Friday June 19 - 7:30 AM start**

***Ring 1—South Ring***

- Hi/Lo Trillium Hunters
- 2'9" Modified Children's Hunters
- 2'9" Modified Children's Medal  
(*Medal to be run as 4th trip w/  
division*)
- 2'6" Children's Hunter Division

***Ring 2—7:30 AM start***

- 2'6"-2'9" Low/High Development  
Hunter Division
- 2'6" Amateur Hunters
- Hack Division (Road/Show/Pleasure)  
(*to be run in which ever ring finishes  
first*)

**Saturday June 20 - 7:30 AM start**

***Ring 1 -South Ring***

- Short Stirrup
- My First Medal
- Children's Hunter Division
- Children's Medal
- A Equitation

- Large Pony Division

***Ring 2—7:30 AM start***

- Modified Pony Division (L-M-S)
- Small Pony Division
- C Equitation Flat  
(*O/F with division*)
- Medium Pony Division
- B Equitation Flat  
(*O/F with division*)

**Sunday June 21 - 7:30 AM start**

***Ring 1—South Ring***

- Clear Round (.90M)
- .90 M Jumper (0.90 m)
- 1M Jumper (1.0 m)
- Jumper Medal (1.0 m)
- 1.10 M Trillium Jumper (1.10m)

***Ring 2—7:30 AM start***

- Low Hunter Division
- Adult Amateur Hunter Division
- Adult Amateur Equitation O/F  
(*tied in with division—4th trip*)
- Adult Amateur Equitation –Flat  
Modified Adult Hunters
- Modified Adult Medal  
(*Medal to be run as 4th trip w/division*)  
(Hacking in hunters rings until 7 am on  
each day of showing)

**Closing Date: June 15, 2020****Entries to:** 100 Silver Hill Side Rd  
RR#3, Langton ON  
N0E 1G0**Phone:** 905-876-9142**Fax:** 519-875-4149**Online entries:**

www.showmate.net

**Show Manager:** Lisa Mitchell**Judges:** Ann McKay &  
Val Sinke**Steward:** Sharon MacBay**Course Designer:** Sue Fish**Timer:** David Christie**Show Secretary:** Lisa Mitchell/  
Roy Fish**Ingates:** Stacey French/Chelsea  
Miller/Andrea McDonald**Medic:** Brantor**Pricing and Rules (see page 22)**

Administration Fee: \$25.00

Scratch Fee: \$40.00

Stall Fees: \$55.00/day  
(includes one bag of shavings)

Cheques are made payable to:

**Twinholm Stables****Hunter Classes:** 3 O/F & 1 U/S**Jumper Classes:** Table A Immed.

JO/ Speed/Power &amp; Speed

*Stalls must be booked in advance. No  
Refunds on Stalls. **Please contact  
Roy Fish to book –905-876-9142***Scratch and Administration Fees will  
be applied to all Scratched Entries.*Full entry charges will be applied if**the show office is not notified of the  
scratch..*All entries (including faxed entries)  
must be received prior to the closing  
date otherwise post entry fees will  
apply. **Full payment/open cheque  
required to receive show number  
(s).****Un-judged Schooling available**  
(see Page 15 for details).Show schedule is subject to change  
without notice at management discre-  
tion. **No dogs please.**

Google Map: 5XQ4+CV

**Twinholm Stables @ The Ancaster Fairgrounds**

630 Trinity Road, RR#1

Jerseyville ON, L0R 1R0—PLEASE ENTER FROM GATE 3—TRAILERS/CARS

**CENTRAL WEST**  
TRILLIUM CIRCUIT

**CAMBERWELL STABLES TRILLIUM SHOW**

**July 3– 5, 2020**

**Friday July 3 - 8 AM start**

***Ring 1 (Front Sand Ring)***

- Hack Division  
(Road/Show/Pleasure)
- 2'6" Children's Hunters
- 2'6" Amateur Hunters

***Ring 2 (Side Sand Ring)***

- 2'6"-2'9" Low/High Development Hunter Division
- Modified Children's Hunter Division
- Modified Children's Medal *(Medal to be run as 4th trip w/division)*

- Hi/Lo Trillium Hunters

**Saturday July 4 - 8 AM start**

***Ring 1 (Front Sand Ring)***

- Short Stirrup
- My First Medal
- B/C Equitation *(O/F for horses)*
- B/C Equitation *(O/F for larges)*
- Small Pony Hunter Division  
*(B/C equitation tied in with Division)*
- C Equitation on the Flat
- B Equitation on the Flat
- Medium Pony Hunter Division

*(B/C Equitation tied in with Division)*

***Ring 2 (Side Sand Ring) 8AM***

- Modified Pony Division (S-M-L)
- Large Pony Division
- A Equitation on the Flat
- Children's Hunter Division
- A Equitation Over Fences  
*(to run with divisions)*
- Children's Medal

**Sunday July 5 - 8 AM start**

***Ring 1 (Front Sand Ring)***

- .90 M Jumpers (.90 m)
- 1M Jumpers (1.0 m)
- Jumper Medal (1.0 m)
- 1.10M Trillium Jumper (1.10 m)

***Ring 2 (Side Sand Ring)***

- Low Hunter Division
- Adult Amateur Hunter Division
- Adult Equitation O/F *(tied in with hunter division)*
- Adult Equitation on the Flat
- Modified Adult Hunter Division
- Modified Adult Medal *(Medal to be run as 4th trip w/division)*

Hacking in the hunter rings is permitted as per show management from 7:15 to

**Closing Date:** June 29, 2020  
**Entries to:** 2745 Wessel Drive  
RR#1 St. Catherines, ON  
L7R 6P7

**Phone:** 905-325-0997  
**Email:** info@camberwell.ca  
**Online entries:**  
www.showmate.net

**Judges:** Sharon MacBay &  
Julie McConnell

**Steward:** Susan Evans  
**Course Designer:** Sue Fish

**Timer:** David Christie  
**Show Manager:** Tammy LeBlanc  
**Show Secretary:** Lisa Mitchell

### **Pricing and Rules (see page 22)**

Administration Fee: \$25.00  
Scratch Fee: \$40.00  
Stall Fees: \$40.00/day  
Overnight stall: \$40.00

Cheques are made payable to:  
Camberwell Stables (E-transfer are an  
option for payment at this show)

**Hunter Classes:** 3 O/F & 1 U/S  
**Jumper Classes:** Table A Immed. JO/  
Speed/Power & Speed

*Stalls must be booked in advance. No  
Refunds on Stalls.*

Scratch and Administration Fees will  
be applied to all Scratched Entries.  
*Full entry charges will be applied if the*

*show office is not notified of the  
scratch.*

All entries (including faxed entries)  
must be received prior to the closing  
date otherwise post entry fees will  
apply. **Full payment/open cheque  
required to receive show number(s).**

**Un-judged Schooling available**  
(see Page 15 for details).

Show schedule is subject to change  
without notice at management discre-  
tion. **No dogs please.**

**Hacking is permitted in the hunter  
rings prior to the show day. 6:30 am  
-7:30 am**

### **Camberwell Stables**

2745 Wessels Drive, RR #1, St. Catherines ON, L2R 6P7  
Phone: 905-325-0997      Google map: 4M3M+4C Pelham, Ontario



**CENTRAL WEST**  
TRILLIUM CIRCUIT

**PARISH RIDGE STABLES TRILLIUM SHOW**

July 24-26, 2020

**Friday July 24 - 7 AM start**

***Ring 1***

- 2'6"/2'9" Low/High Development Hunter Division
- 2'6" Children's Hunter Division
- Hi/Lo Trillium Hunter Division

***Ring 2—7:30 AM start***

- Modified Children's Hunter Division
- Modified Children's Medal
- Modified Adult Hunter Division
- Modified Adult Medal

*(Medals to be run as 4th trip w/division)*

**Saturday July 25 - 7:30 AM**

***Ring 1***

- Short Stirrup
- My First Medal
- C/B Equitation O/F-Horse height
- C/B Equitation O/F-Large Pony
- Small Pony Division  
*(B/C equitation tied in)*
- C Equitation on the Flat
- B Equitation on the Flat

- Medium Pony Hunter Division  
*(B/C Equitation tied in)*

- Modified Pony Division

***Ring 2 - 7:30 AM start***

- Large Pony Division  
*(A Equitation O/F tied in with Division)*
- A Equitation on the Flat
- Children's Hunter Division  
*(A Equitation O/F tied in with Division)*
- Children's Medal

**Sunday July 26 - 7:30 AM start**

***Ring 1***

- Low Hunter Division
- Adult Amateur Hunter Division
- Adult Equitation O/F  
*(tied in with hunter division)*
- Adult Equitation on the Flat
- 2,6 Amateur Hunter Division

***Ring 2— 7:30 AM start***

- Hack Division (Road/Show/Pleasure)
- .90 Jumpers (0.90 m)
- Jumper Medal (1.0 m)
- 1M Jumpers (1.0 m)
- 1.10 M Trillium Jumpers (1.10 m)

**Closing Date:** July 20, 2020

**Entries to:** Parish Ridge Stables

**Phone:** 905-331-7176

**Online entries:**

www.showmate.net

**Website:**

www.parishridgestables.com

**Show Manager:** James Parish

**Judges:** Diane Ratigan

& Christine Reupke

**Steward:** Sharon MacBay

**Course Designer:**

Mike Giovinazzo

**Timer:** David Christie

**Show Secretary:** Natalie Parish

**Pricing and Rules (see page 22)**

Administration Fee: \$25.00

Scratch Fee: \$40.00

Stall Fees: (box) \$75.00/day

Stall Fees: (standing) \$65.00/day

Cheques are made payable to:

Parish Ridge Stables

(NSF-\$30 charge)

**Hunter Classes:** 3 O/F & 1 U/S

**Jumper Classes:** Table A Immed.

JO/ Speed/Power & Speed

*Stalls must be booked in advance.*

**No Refunds on Stalls. Limited number available. CALL TO BOOK DIRECTLY.**

Scratch and Administration Fees will be applied to all Scratched Entries.

*Full entry charges will be applied if the show office is not notified of the scratch.*

All entries (including faxed entries) must be received prior to the closing date otherwise post entry fees will apply. **Full payment/open cheque required to receive show number (s).**

**Un-judged Schooling available**

(see Page 15 for details).

Show schedule is subject to change without notice at management discretion. **No dogs please.**

**\*\*Hacking is permitted in the hunter rings from 6:15am-7:00 am or start of show day\*\***

**Parish Ridge Stables**

2377 Colling Road, Burlington ON

Telephone: 905-331-7176 Google Map: C477+42

**CENTRAL WEST**  
TRILLIUM CIRCUIT

**VANBROOK EQUESTRIAN TRILLIUM SHOW**

**August 7-9, 2020**

**Friday Aug. 7 - 7 :30 AM start**

***Plateau Ring***

- 2'6"/2'9" Low/High Development Hunter Division
- 2'6" Children's Hunter Division

***Main Ring - 7:30 AM start***

- Hi/Lo Trillium Hunter Division
- Modified Adult Hunter Division
- Modified Adult Medal (*Medals to be run as 4th trip w/division*)
- Modified Children's Hunter Division
- Modified Children's Medal

**Saturday Aug. 8 - 7:30 AM start**

***Plateau Ring***

- Short Stirrup Division
- My First Medal
- C Equitation on the Flat
- Small Pony Hunter Division (*B/C equitation tied in*)
- B Equitation on the Flat
- Medium Pony Hunter Division (*B/C Equitation tied in*)
- C/B Equitation O/F - Large Pony
- C/B Equitation O/F - Horse height

- Modified Pony Hunter Division

***Main Ring - 7:30 AM start***

- Large Pony Hunter Division
- A Equitation on the Flat
- Children's Hunter Division
- A Equitation Over Fences (*A Equitation O/F tied in with Division*)
- Children's Medal

**Sunday Aug. 9 - 7:30 AM start**

***Plateau Ring***

- Hack Division (*Road/Show/Pleasure*)
- Low Hunter Division
- Adult Amateur Hunter Division
- Adult Equitation O/F (*tied in with hunter division*)
- Adult Equitation on the Flat
- 2'6" Amateur Hunter Division

***Main Ring—7:30 AM start***

- .90 M Jumpers (0.90 m)
- Jumper Medal (1.0 m)
- 1M Jumpers (1.0 m)
- 1.10 M Trillium Jumpers (1.10 m) (*Hacking will be permitted from 6:45 to the start of the ring—hunters only*)

**Closing Date: August 3 , 2020**

**Entries to:** c/o 52 Centre St.  
Cambridge ON N1R 4E8

**Phone:** 647-323-7714

**Online entries:**

www.showmate.net

**Show Manager:** Brittany Simmons

**Assistant:** Yvonne Busby

**Judges:** Christine Reupke/Diane Ratigan

**Steward:** Sharon MacBay

**Course Designer:** Sue Fish

**Timer:** David Christie

**Show Secretary:** Lisa Mitchell

**Medic:** Brantor

**Pricing and Rules (see page 22)**

Administration Fee: \$25.00

Scratch Fee: \$40.00

Stall Fees: \$55.00/day

Cheques are made payable to:

Vanbrook Equestrian

**Hunter Classes:** 3 O/F & 1 U/S

**Jumper Classes:** Table A Immed.

JO/ Speed/Power & Speed

***Stalls must be booked in advance.***

***No Refunds on Stalls. Bedding included. Please bring your own buckets for water.***

Scratch and Administration Fees will be applied to all Scratched Entries.

*Full entry charges will be applied if*

*the show office is not notified of the scratch.*

All entries (including faxed entries) must be received prior to the closing date otherwise post entry fees will apply. **Full payment/open cheque required to receive show number (s).**

**Un-judged Schooling available**  
(see Page 9 for details).

Show schedule is subject to change without notice at management discretion. **No dogs please.**

**Vanbrook Trillium Show c/o Iron Horse Equestrian Complex**

5244 #1 Side Road

Burlington ON

Phone: 647-323-7714

Google Map: C5GJ+C3 Burlington, Ontario

CENTRAL WEST  
TRILLIUM CIRCUIT

IRON HORSE TRILLIUM SHOW

August 21-23

**Friday Aug. 21 - 8 AM start**

***Ring 1***

- 2'6"-2'9" Low/High Development Hunter Division
- 2'6" Children's Hunter Division

***Ring 2 —8 AM start***

- Hi/Lo Trillium Hunter Division
- Modified Adult Hunter Division
- Modified Adult Medal (*w/division*)
- Modified Children's Hunter
- Modified Children's Medal (*Medal to be run as 4th trip w/division*)

**Saturday Aug. 22 - 8 AM start**

***Ring 1***

- Short Stirrup Division
- My First Medal
- C Equitation on the Flat
- Small Pony Hunter Division (*B/C O/F equitation tied in*)
- B Equitation on the Flat
- Medium Pony Hunter Division (*B/C Equitation tied in*)
- C/B Equitation O/F - Large Pony
- C/B Equitation O/F - Horse height

- Modified Pony Division

***Ring 2***

- A Equitation on the Flat
- Large Pony Division
- Children's Hunter Division (*A Equitation O/F tied in with Division*)
- Children's Medal

**Sunday Aug. 23 - 8 AM start**

***Ring 1***

- Hack Division
- 2'6" Amateur Hunter Division
- Low Hunter Division
- Adult Amateur Hunter Division
- Adult Equitation O/F (*tied in with hunter division*)
- Adult Equitation on the Flat

***Ring 2***

- .90 M Jumpers (.90 m)
- Jumper Medal (1.0m)
- 1M Jumpers (1.0 m)
- 1.10 M Trillium Jumpers (1.10 m)

\*\*Hacking will be permitted in the hunter rings each morning from 6:30 am-7:30 am\*\*



**Closing Date: August 17 , 2020**

**Entries to:** Iron Horse Equestrian  
Complex 5244 #1 Side Road  
Burlington ON

**Phone:** 905-220-9493

**Online entries:**

www.showmate.net

**Show Manager:** Marion Sharp

**Assistant:** Avery Sharp

**Judges:** Sharon MacBay/Sherri  
Whitworth-Denouden

**Steward:** Susan Legge

**Course Designer:** Mike Pegg

**Timer:** David Christie

**Show Secretary:** Avery Sharp

**Medic:** Brantor

**Ingates:** Laura White/Lynn

Johnson

Web: www.ironhorseperformance.com

**Pricing and Rules (see page 22)**

Administration Fee: \$25.00

Scratch Fee: \$40.00

Stall Fees: (box) \$45.00/day  
(bedding included/no buckets)

Cheques are made payable to:  
Iron Horse

**Hunter Classes:** 3 O/F & 1 U/S

**Jumper Classes:** Table A Immed.  
JO/Speed/Power & Speed

*Stalls must be booked in advance. No  
Refunds on Stalls. Please bring your  
own water & feed buckets. Bedding  
supplied.*

Scratch and Administration Fees will  
be applied to all Scratched Entries.

*Full entry charges will be applied if  
the show office is not notified of the  
scratch.*

All entries (including faxed entries)  
must be received prior to the closing  
date otherwise post entry fees will  
apply. **Full payment/open cheque  
required to receive show number  
(s).**

**Un-judged Schooling available**  
(see Page 9 for details).

Show schedule is subject to change  
without notice at management discre-  
tion. **No dogs please.**

**Iron Horse Equestrian Complex**

5244 #1 Side Road

Burlington ON

Phone: 289-838-4444 Google Map: C5GJ+C3 Burlington, Ontario

# ***DATES TO REMEMBER***

Each year the Central  
West Board of  
Directors hosts the  
Annual General  
Meeting of the Central  
West membership. The  
date is: **March 16th,  
2020 - location & time  
TBA**

The Board of Directors  
also hosts a Town Hall  
Meeting to discuss the  
Zone. This meeting is  
open to Central West  
members and is a great  
place to learn about the  
Zone and how it works!

**PLAN TO ATTEND!**  
**[www.centralwestzone.com](http://www.centralwestzone.com)**



# CENTRAL WEST TRILLIUM CIRCUIT



Congratulations to all of our photo  
contest entries—here are the runners up!







**Central West entries:**  
**[www.showmate.net](http://www.showmate.net)**

# GREENHAWK<sup>®</sup>

## EQUESTRIAN SPORT

PLEASE VISIT US FOR  
**ALL OF YOUR**  
*equestrian &  
pet needs!*

### **GREENHAWK AND BARK & FITZ BURLINGTON**

2290 Queensway Dr. Burlington, ON

Tel: (905) 333.5858

Mon - Wed & Fri: 9:30am - 6:00pm

Thurs: 9:30am - 8:00pm

Sat: 9:00am - 5:00pm | Sun: 11:00am - 4:00pm

### **GREENHAWK CAMBRIDGE**

15 Sheldon Dr., Unit #10. Cambridge, ON

Tel: (519) 623.3535

Mon - Wed & Fri: 10:00am - 6:00pm

Thurs: 10:00am - 8:00pm

Sat: 9:00am - 5:00pm | Sun: 11:00am - 4:00pm